

Maryland Public School Construction Capital Improvement Program

Fiscal Year 2021 Public School Construction Allocations Approved by the Interagency Commission on School Construction

Published June 1, 2020



Interagency Commission on School Construction
200 W. Baltimore Street
Baltimore, MD 21201
(410) 767-0617
(410) 333-6522 FAX

This report is available for download at:
iac.maryland.gov

**FISCAL YEAR 2021
CAPITAL IMPROVEMENT PROGRAM**

INTERAGENCY COMMISSION ON SCHOOL CONSTRUCTION

TABLE OF CONTENTS

	<u>PAGE</u>
TRANSMITTAL LETTER	
INTRODUCTION	
• THE INTERAGENCY COMMISSION ON SCHOOL CONSTRUCTION	1
• FACTORS OF NOTE	2
<i>I. Construction Cost</i>	2
<i>II. State - Local Cost Share Percentages</i>	3
<i>III. Facilities Maintenance and the Capital Improvement Program</i>	3
<i>IV. Special Funding Programs and Initiatives</i>	3
• STATE FUNDING PARTICIPATION	4
• LOCAL FUNDING PARTICIPATION	6
• THE CAPITAL IMPROVEMENT PROGRAM PROCESS TIMELINE	7
• FY 2021 CIP REQUESTS AND APPROVALS	9
SECTION I - PROJECT CATEGORIES	10
SECTION II - EVALUATION OF PROJECTS/STATUS	10
SECTION III - GENERAL CONDITIONS FOR LOCAL PLANNING APPROVAL (LP)	11
SECTION IV - GENERAL CONDITIONS FOR CONSTRUCTION FUNDING (F)	11
SECTION V - GENERAL CONDITIONS FOR FUNDING OF RELOCATABLE CLASSROOM PROJECTS	12
SECTION VI - GENERAL CONDITIONS FOR FUNDING OF SYSTEMIC RENOVATION PROJECTS	12
SECTION VII - LOCAL FUNDING	13
SECTION VIII - SUMMARY OF FINANCIAL TRANSACTIONS	15
SECTION IX - STATE-LOCAL COST SHARE PERCENTAGES	16
SECTION X - PAST AND PROJECTED SCHOOL CONSTRUCTION COSTS	17
SECTION XI - SUMMARY OF FY 2021 CAPITAL IMPROVEMENT PROGRAM	18
SECTION XII - SUMMARY OF PROJECT REQUESTS AND APPROVALS	19
SECTION XIII - SUMMARY OF ESTIMATED BALANCES DUE	27
SECTION XIV - SUMMARY OF FY 2021 PLANNING APPROVALS	30
SECTION XV - SUMMARY OF FY 2021 CONSTRUCTION APPROVALS	31
SECTION XVI - SUMMARY OF FY 2021 SYSTEMIC RENOVATION APPROVALS	33
DETAILED PROGRAM BY SCHOOL SYSTEM (FOLLOWING PAGES)	

Interagency Commission on School Construction

Karen Salmon, Superintendent of Schools; Chairperson
Denise Avara, Appointee of the Governor; Public Member
Ellington Churchill, Secretary of Department of General Services; Member
Linda Eberhart, Appointee of the Speaker of the House; Public Member
Brian Gibbons, Appointee of the Speaker of the House; Public Member
Ed Kasemeyer, Appointee of the President of the Senate; Public Member
Gloria Lawlah, Appointee of the President of the Senate; Public Member
Dick Lombardo, Appointee of the Governor; Public Member
Robert S. McCord, Secretary of Department of Planning; Member

Robert A. Gorrell, Executive Director

CIP Overview

The annual Capital Improvement Program (CIP) represents the State's commitment to fund local school construction based on the Interagency Commission's review and analysis of proposed projects within the context of State goals and budgetary constraints. In accordance with Maryland law (Education Article §5-304(b)(5), Annotated Code of Maryland, the IAC shall approve, on or after May 1 every year, public school construction projects that comprise 100% of the school construction allocation included in the capital budget bill as enacted. The IAC met this requirement for FY 2021 on May 14, 2020.

For a list of the other programs, please visit the IAC website at <http://iac.maryland.gov/programs/programindex.cfm>

INTERAGENCY COMMISSION ON SCHOOL CONSTRUCTION

June 1, 2020



LARRY HOGAN
GOVERNOR

KAREN B. SALMON, PhD.
CHAIRPERSON

ROBERT A. GORRELL
EXECUTIVE DIRECTOR

200 WEST BALTIMORE STREET
BALTIMORE, MD 21201
410-767-0617

IAC.MARYLAND.GOV

IAC.PSCP@MARYLAND.GOV

To Interested Parties,

The Interagency Commission on School Construction (IAC) met on May 14, 2020 to approve the final FY 2021 Public School Construction Capital Improvement Program (CIP) planning and funding requests for projects from the 24 local school systems and Maryland School for the Blind (MSB). The IAC received 55 planning requests and 160 funding requests totaling approximately \$730 million. These requests were approved by the local boards of education and supported by the local government bodies.

On May 14, 2020, the IAC approved the allocation of 100% of the available CIP funding for FY 2021 in accordance with the Maryland Consolidated Capital Bond Loan (MCCBL of 2020). Of the 160 funding requests, the IAC approved 111 funding projects including 41 major construction projects, 69 systemic renovations, and one kindergarten project. A total of 22 projects received planning approval.

The attached Fiscal Year 2021 CIP is based on the priority submission of each local education agency and the MSB, discussions between local representatives and the staff of the Interagency Commission, available funding for eligible projects, and an evaluation and analysis of each project. The IAC strives to provide funding to each LEA, within the available allocation, in approximately the amount of their FY 2010-FY 2020 10-year average allocation. This is done in an effort to provide LEAs with a predictable amount of funding for project planning purposes. In some instances LEAs with 10-year funding averages that are not sufficient to fund larger projects have been provided funding above the 10-year average to provide an adequate funding level for those projects.

Please contact us if you have any questions regarding the enclosed IAC approvals.

Sincerely,

Karen B. Salmon, Ph.D., Chair
Interagency Commission on School Construction

Public School Construction in Maryland

Fiscal Year 2021 Capital Improvement Program

INTRODUCTION

Interagency Commission on School Construction

The State of Maryland has invested more than \$8.9 billion in school construction since the inception of the Maryland Public School Construction Program in 1971.

The FY 2021 Capital Improvement Program (CIP) application process began on October 4, 2019 and resulted in approval of \$386 million in State investments for projects statewide. The Interagency Commission on School Construction (IAC), an independent commission charged with oversight of the program, approved the allocations at their meeting on May 14, 2020.

CIP funding is intended to be used to build new and replacement schools, to renovate facilities, and to replace major building systems that keep school facilities educationally sufficient, such as a roof that doesn't leak or a boiler that provides heat. The program includes initiatives such as the Enrollment Growth and Relocatable Classroom (EGRC) program, which provides additional funding to Local Education Agencies (LEAs) that have high enrollment growth and/or depend on a significant number of relocatable classrooms, and the Innovation Incentive Pilot Program which provides additional state funds for projects that achieve a rolling state average cost per student that is 30% or more below the rolling state average cost per student for the school type.

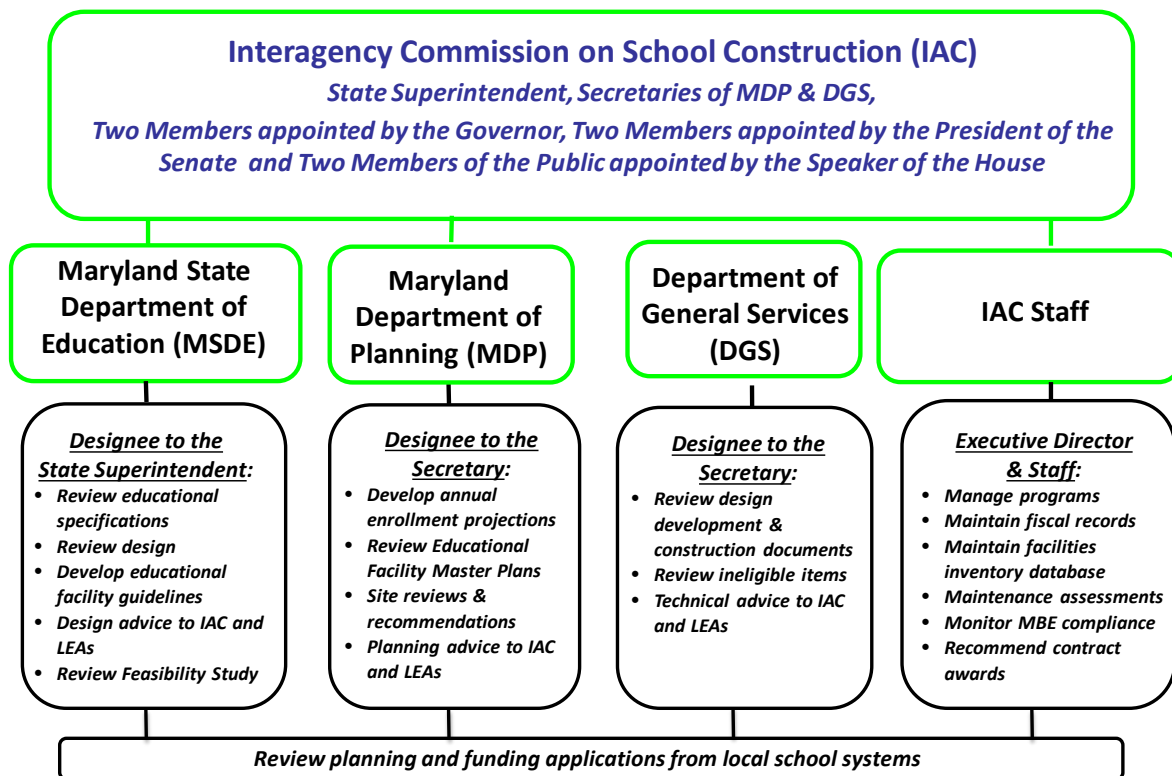
Schools represent a major investment in bricks and mortar and have to respond to ever-changing demographics and instructional trends. These facilities rank right behind roads and highways in State public infrastructure spending. Effective school facilities spending requires a statewide portfolio perspective to balance educational sufficiency *and* fiscal sustainability. Accordingly, House Bill 1783 (2018), the 21st Century School Facilities Act, created the Workgroup on Educational Development Specifications and the Workgroup on the Assessment and Funding of School Facilities to consider and make recommendations for changes to the State funding program.

The Workgroup on Educational Development Specifications began their work in November of 2018 and concluded in May of 2019, and focused much of their discussion on the total cost of ownership for school facilities. Owning and operating a facility over time often equals or exceeds the first cost to construct the facility. Early planning and design provide an opportunity to consider the total cost to own a facility over its expected life and to make decisions that provide facilities that are sufficient to support educational programs and that are also affordable to own, freeing up funding to be used where it is most needed – for teachers and programs. The Workgroup on the Assessment and Funding of School Facilities held a total of 6 meetings from June to November of 2019 and have made draft recommendations that will be considered once information from the statewide school facilities assessment is available. Final Workgroup reports are available on the IAC's website at iac.maryland.gov.

As school conditions in the State continue to worsen and resources remain limited, it is more imperative than ever that the local governments and the State work together to identify and implement best practices in school facilities ownership and funding to ensure that every child and teacher has a sufficient space for learning.

General information about the Capital Improvement Program is found in this document. Information regarding policies and procedures can be found in the Regulations for the Administration of the Public School Construction Program (COMAR 14.39.02) and the Public School Construction Program Administrative Procedures Guide (APG). The regulations are available at the website of the Division of State Documents at www.dsd.state.md.us; the APG is available on the IAC's website at iac.maryland.gov. Information on annual Capital Improvement Programs from FY 2001 through FY 2021 is also available on the IAC's website.

Interagency Commission on School Construction Program



Notable Factors in FY 2021 Funding

I. Construction Cost

FY 2021 State Construction Cost Figure

Funding of projects is based on a number of factors including cost per square foot. The cost per square foot for projects to be bid after July 1, 2020 is provided below. This number is based on recent bids and review of national and regional building cost indices¹. The IAC will continue to monitor trends to determine if the State needs to make other changes in the way it calculates the

¹Vermeulens, RS Means, Engineering News Record, etc. <http://iac.maryland.gov/programs/programindex.cfm>

cost per square foot for future CIP projects. (See the historical trend on costs going back to 2003 in Section X).

1. Building only (less site development): \$329/sf.
2. Construction (with site development for new construction at 19 % of the total cost): \$391.51/sf.

II. State - Local Cost Share Percentages

Section IX shows the State-local cost share percentages for projects in FY 2020, FY 2021 and FY 2022. On September 12, 2019, the IAC adopted revisions to the state cost share formula, and also voted to hold the State-local cost share percentages for FY 2021/FY 2022 at the same levels as FY 2020 for LEAs that would have experienced a decreased State share under the calculation formula, per COMAR 14.39.02.05.

III. Facilities Maintenance and the Capital Improvement Program

Facilities maintenance is indispensable to protect State and local investments and to ensure the wellbeing of students, teachers and other school building occupants. The IAC considers results of the maintenance assessment program to understand capital funding needs. As LEAs' facilities portfolios have aged (the average age of Maryland school facilities has grown to 30 years, worsening from 24 in 2005), they face growing challenges in trying to secure sufficient maintenance capital to replace expiring building systems (a.k.a. systemic renovations such as a new roof, HVAC system, and/or windows). Systemic projects are an allowable use of CIP funding yet they compete with the new and replacement schools and facility renewal projects an LEA might need. Historic Annual Maintenance Reports are available on the IAC website.

IV. Special Funding Programs and Initiatives

Capital Grant Program for Local School Systems with Significant Enrollment Growth or Relocatable Classrooms (EGRC): Established by legislation in calendar year 2015, the program's funds are administered by the IAC and distributed in accordance with Education Article §5-313 to provide an additional grant for the Capital Improvement Program for local school systems that are experiencing significant enrollment growth or use a significant number of Relocatable classrooms.

1. EGRC grants are supplemental to the amount that would otherwise be appropriated to the eligible LEA in the CIP through other funding programs.
2. Projects funded with the EGRC allocation must meet all of the procedural requirements that apply to projects submitted in an annual Capital Improvement Program.
3. Grants recommended by the IAC under this program are subject to the State and local cost-share percentages for each school system.
4. Prior-year EGRC funds that are unexpended may be held in reserve and applied within two years to an eligible project in a subsequent CIP, in addition to other funds that the LEA may be granted.

The EGRC funds are generally distributed proportionally, based on each eligible LEA's share of the total student enrollment of the eligible school systems. For FY 2021, the capital budget bill included language to increase the appropriation to \$50 million and approved specific allocations for seven LEAs. An additional \$25 million was authorized for distribution to six (6) LEAs that does not require a local cost share match. A total of \$2.352 million was available for distribution from FY 2019 and FY 2020 EGRC funding.

The following table shows the available prior year allocations and FY 2021 EGRC allocations for each LEA:

LEA	FY 2021 Appropriation per ED Art. §5-313 (\$000)	FY 2019 and FY 2020 Prior Year EGRC (\$000)	FY 2021 Appropriation (\$000)
Anne Arundel	\$9,177		\$9,177
Baltimore	\$9,469		\$9,469
Caroline	\$1,696		\$1,696
Frederick	\$4,788		\$4,788
Howard	\$14,138	\$1880	\$16,018
Montgomery	\$22,296	\$28	\$22,324
Prince George's	\$13,436	\$444	\$13,880
Total	\$75,000	\$2,352	\$77,352

Maryland School for the Blind (MSB): Education Article §8-315, Annotated Code of Maryland allows the Maryland School for the Blind to receive State construction funding for eligible projects through the Public School Construction Program for fiscal years 2013 through 2028.

State participation in approved projects is calculated at 93% of total construction cost, and no State Rated Capacity or gross area baseline is determined for the unique MSB facilities. The MSB has developed an extensive campus renewal plan, with a life-skills building for children with multiple disabilities that was completed in 2014, the Autism-Blind Classrooms and Cottages that were completed in 2015 and 2016 respectively, and Pre-school Early Learning and Outreach Center completed in 2018. These buildings have received State funding allocations totaling \$45 million.

The FY 2021 CIP includes fourth-year funding for the renovation/addition of Newcomer, Case and Campbell Halls that began construction in the fall of 2017. Future requests are expected to include new construction of dormitories for the General Academic Blind and Functional Academic Blind programs and a renovation/addition project for the Russo Center auditorium.

STATE FUNDING PARTICIPATION

Background: When the Public School Construction Program began nearly half a century ago, the State paid for architectural and engineering (A&E) fees and movable furniture and equipment in addition to a project’s construction costs. The State contribution share generally was about 95-99 percent of the total project cost, (land acquisition was never eligible for State funding). In the mid-1970s, the responsibility for A&E fees shifted to local jurisdictions, and the cost of movable furniture and equipment made a similar shift in the mid-1980s. At about that time, the State implemented a shared State-local cost formula to determine State participation in eligible school construction costs. The formula accounted for the relative wealth of jurisdictions and the General Assembly enacted unique funding formulas for Baltimore City Public Schools and Prince George’s County Public Schools for certain periods of time.

In April 2004, the IAC adopted a revised formula for State participation which takes account of local wealth, the number of children in the Free and Reduced Price Meal Program, the status of the jurisdiction, enrollment growth above the State average, and the local funding effort toward school construction (see COMAR 14.39.02.05). See Section IX for the currently applicable percentages.

Reversion of Funding: Reverted funds are held in a Statewide Account that is maintained by the IAC. Per Education Article 5-303(j), funds allocated to a project that are reverted to the Reserve Account

remain with the LEA to which they were originally allocated for two years. Sources of reverted funds include projects that bid below budget and projects that are cancelled (generally through local decision but occasionally on the approval of the IAC when funds have not been under contract within a two-year period after approval per statute). An LEA may use these funds, upon IAC approval, to provide funding within the maximum State construction allocation for eligible projects not approved for funding or not fully funded in the current fiscal year, or funds may be held in reserve for eligible projects in the following fiscal year. Reverted funds must be obligated within two years of approval of the reversion in order to be retained.

Per Student Area Allocations: At their meeting on May 9, 2019 the IAC approved Gross Area Baselines (GABs) to replace the Maximum Gross Area Allowances (MGAAs) used in calculating state construction allocations and to allow an IAC variance process by which the IAC is now able to grant additional square footage allowances on a case-by-case basis upon an LEA's request and presentation of sufficient data supporting the need for additional square footage. The GAB is determined on a per-student basis that varies depending upon the type of facility and the eligible projected enrollment to be served in the facility. The GABs include add-on square footages for students enrolled in career and technology programs and for students with level-C/S/W Individualized Education Plans (IEPs).

Cost per Square Foot: The cost per square foot that will be applicable to major CIP projects is typically established by the IAC in July of the calendar year in which applications are submitted, that is, one year before approved CIP projects are likely to be solicited by the LEA. The figure is based on bids received for new school construction in the prior six-month period, cost information derived from industry sources, and the anticipated cost escalation factors used by other State agencies, particularly the Department of General Services. The figure may be adjusted by the IAC to reflect market conditions prior to submission of the final state Capital Improvement Program approvals. For further information on the FY 2021 cost of construction, see "The Capital Improvement Program: Notable Factors in FY 2021 Funding", "Construction Cost," page 2.

Calculation of State Participation: Depending on the type of public school construction project proposed, the State's participation in eligible project costs is determined by a formula based either on student enrollment or on the estimated or actual cost of the project. In either case, the maximum State construction allocation is an estimate of the State's participation that is established at the time of first-year funding for a project. The State funding calculation for each major project is shown in a worksheet that follows the CIP section for the specific LEA. Certain project types, including small renovations, additions, and systemic renovations, do not receive funding worksheets. Funding is based on LEA estimates for construction cost.

The final funding allocation is subject to reduction based on the awarded scope of work, the results of bidding, the inclusion of items ineligible for State participation, the acceptance of alternates after contract award, and project close-out calculations. For projects delivered through multiple-prime contracts, overall State participation in the project may be reduced if specific contracts do not meet State MBE procedural requirements. All construction costs that exceed the established maximum allocation, including 100% of all ineligible project and construction expenses, are the sole responsibility of the LEA.

Further information on the calculation of State funding participation for all eligible project types is available in COMAR 14.39.02.06 and in Section 102, "Capital Improvement Program," of the *Administrative Procedures Guide*, available on the IAC website².

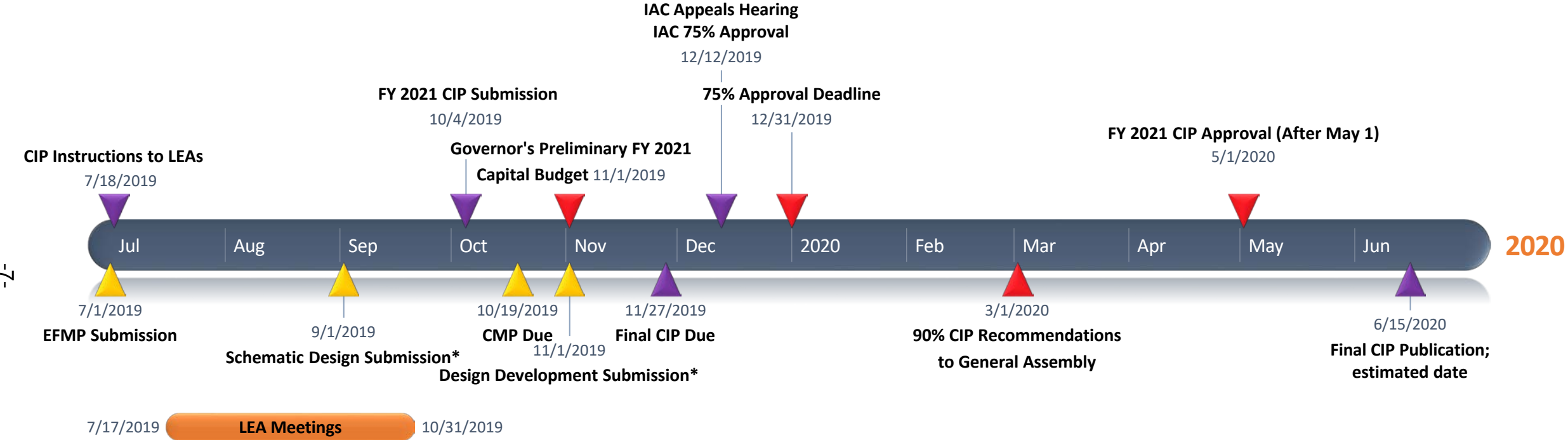
² <http://www.pscp.state.md.us/APG/revisedapgindex.cfm>




LOCAL FUNDING PARTICIPATION

As a threshold condition for eligibility in the State's annual Capital Improvement Program, a local board of education's funding request for a project must be supported by the county's commitment to provide capital funds that match State participation if the project is approved by IAC. Likewise, the local government must provide operating funds for the school when it is occupied by students. The county pledges this commitment by submitting a letter of assurance prior to a date in late November or early December that is established annually.

The IAC's expectation is that a project approved for planning will proceed to construction within two years of the date of that approval. The State's approval of a major project for planning represents a significant commitment of future State resources. In order to maintain the State's future funding obligations within reasonable bounds, not all eligible projects that are submitted by local boards are recommended for planning approval. A statement of local government support for requests for planning approval carries an implicit assurance that local funding will be provided for architectural/engineering services and that local construction funding will be provided at the time that the local board initiates construction. Withdrawal of local funding support is grounds for rescission of project approval.

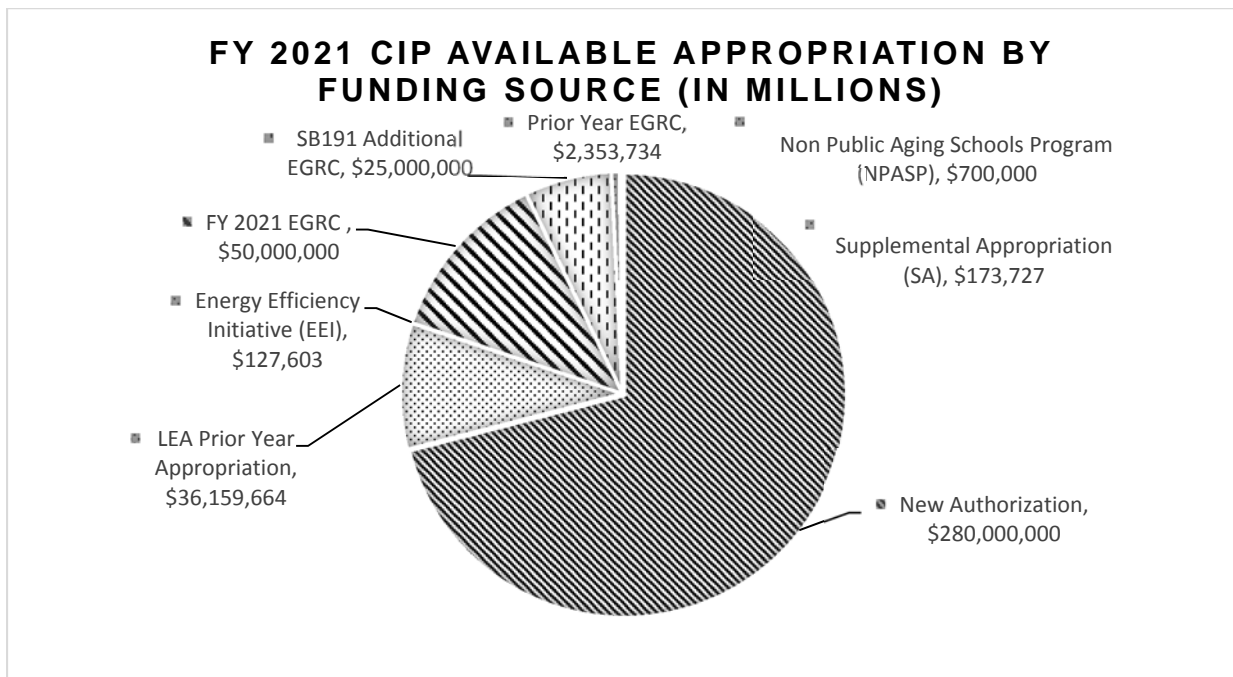
FY 2021 CIP Process Timeline



-  Red markers indicate statutory dates
-  Purple markers indicate CIP submittals and approvals
-  Yellow markers show progress milestones required for CIP approval
- * Or other evidence of project progress to determine eligibility

FY 2021 Capital Improvement Program Available Appropriation By Funding Source

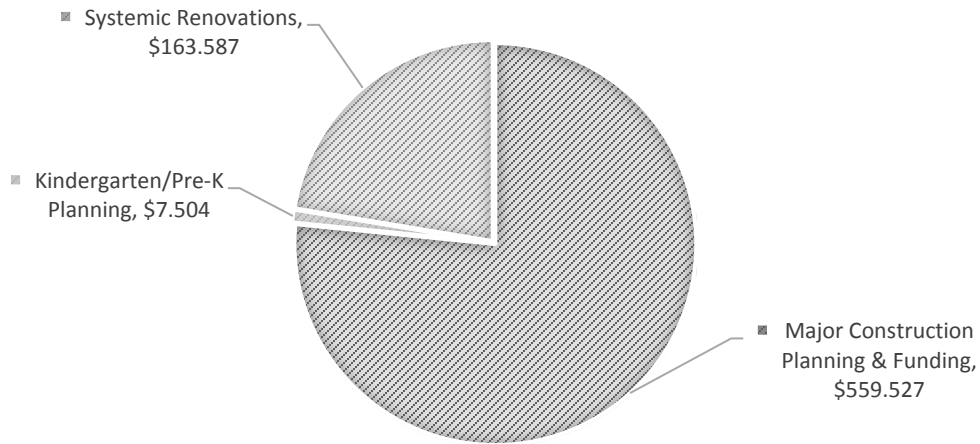
The IAC approvals are based on the approved Maryland Consolidated Capital Bond Loan (MCCBL) of 2020, which authorizes \$280 million of new bond authorization for the FY 2021 CIP, and is supplemented by various other funding sources as outlined in the chart below.



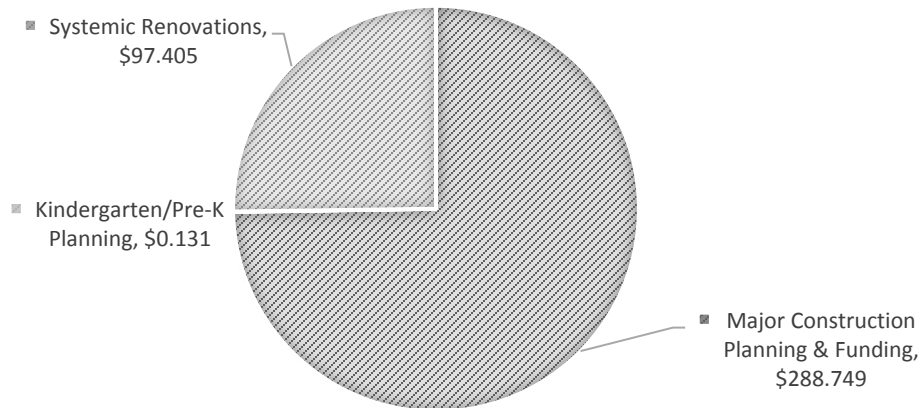
At the time of this writing, \$394.514 million is available, of which \$392.078 million has been allocated to the FY 2021 CIP and includes \$386.2 million for eligible projects, \$.5 million for the Department of General Services (DGS) design consultant fees and \$5.3 million for unanticipated project costs.

	Major Construction Planning	Major Construction Funding	Kindergarten/Pre-K Planning	Kindergarten/Pre-K Funding	Systemic Renovations
Requests	53	57	2	5	98
Approvals	20	41	2	1	69

FY 2021 CIP AMOUNT REQUESTED (IN MILLIONS)



FY 2021 CIP AMOUNT APPROVED (IN MILLIONS)



	Major Construction Funding	Kindergarten/Pre-K Funding	Systemic Renovations	State Reserve Funds	DGS Design Consultant Fees	TOTAL
Requests	\$559.527	\$7.504	\$163.587	n/a	n/a	\$730.618
Approvals	\$288.749	\$0.131	\$97.405	\$5.294	\$.500	\$392.079

SECTION I

PROJECT CATEGORIES

Eligible Capital Improvement Program projects address existing buildings, new construction, and relocatable classrooms. The project classifications under each category are provided in Section 102.4 of the APG. For further details on the submission requirements for individual projects, please reference the APG on the IAC website at iac.maryland.gov.

SECTION II

EVALUATION OF PROJECTS/STATUS

An LEA's request for funding or planning approval of a school construction project is evaluated based on a number of factors, as outlined in Sections III through VI below. These factors include educational adequacy, building condition, State mandates and initiatives regarding educational and growth policies, and current and projected enrollments – not only at the school in question, but also at adjacent or nearby schools.

Based upon the evaluation and progress of a CIP project, the project is recommended for approval or eligibility status as follows:

A – Approval for planning or construction funding: All IAC and LEA staff questions, problems, or comments have been resolved, and the project is approved by the IAC.

B - Deferred but eligible for local planning or construction funding: All IAC and LEA staff questions, problems, or comments have been resolved and the project is eligible for planning or funding, but it has been deferred due to fiscal constraints.

C - Deferred and not currently eligible for a planning or funding approval based on unresolved issues. Outstanding technical issues may include, but are not necessarily limited to: lack of a feasibility study; capacity/enrollment; scope; project schedule; the LEA's ability to carry out a large number of projects; lack of maintenance for the requested component or system; estimated cost; calculation of State or local funds; submission or clarification of Minority Business Enterprise documentation or process; alternative solutions available; lack of site approval; pending waiver regarding location outside of a Priority Funding Area³; lack of supporting documentation; master plan inconsistency; and pending approvals by other agencies. These issues may be resolved at any time prior to final approval of the CIP by the IAC.

D - Denied and not eligible for planning or funding approval. Due to the nature of the project, it is ineligible for State participation. Reasons for ineligibility include but are not limited to: the project scope does not fit within an approved category of State-eligible CIP projects; local fiscal support was not provided or was withdrawn after the date established by the IAC; the project does not meet minimum State requirements for cost or scope; the facility is too new or was too recently renovated; the project was funded through another program or the funds are not required; MBE procedures were not followed in the procurement of the project; the LEA proceeded to construction prior to State approval (systemic renovations); enrollment projections do not justify the project; the future of the facility is uncertain; or the facility has not been adequately maintained.

³ PFAs are designated areas where the State will fund public infrastructure and facilities to meet growth-related needs.

SECTION III

GENERAL CONDITIONS FOR LOCAL PLANNING APPROVAL (LP)

To be eligible for State construction funding, all major projects and school additions must have local planning approval (LP) by the IAC in an approved annual Capital Improvement Program or amendment thereto. New schools and replacement schools on a new site must also have received site approval from the IAC. Smaller projects, typically those that can be designed and built within a single fiscal year, do not require planning approval; prekindergarten and kindergarten projects, however, do require planning approval. While planning approval represents a commitment of future State funding if the project continues to be justified, planning approval cannot be interpreted as a guarantee that construction funding will be allocated in any specific future fiscal year, since funding depends on the availability of State resources and the priority in which the project is presented by the local board.

In the FY 2021 100% Approval of the CIP, the IAC approved planning for 22 major projects. The total funding to which the State will be obligated for major projects is estimated at \$534 million, an increase of approximately \$53 million from the previous estimate in July 2019.

The approval of planning for school construction projects takes into consideration the rating of the project relative to other planning requests, based on a number of quantifiable and non-quantifiable criteria: the number of projects already in planning in a school district and statewide; the location and growth implications of the proposed project; the readiness of the project to proceed compared with other projects; the assurance of local fiscal support for design services; local dependence on State approval in order to proceed; and the impact of the approval on future statewide levels of construction funding, particularly in the two subsequent fiscal years. Projects approved for planning should receive local commitment for local government construction funding within two years of the State approval.

Although the LEA's preliminary estimate of State participation is submitted as part of the request for planning approval, this estimate is not the maximum State construction allocation as approved by the IAC. The maximum State construction allocation is developed through the methods described in regulation and in Section 102 of the APG (found at iac.maryland.gov). The eligible project scope and the State's tentative maximum construction participation are established at the time of planning approval. Upward or downward revisions of State funding may be determined at the time of funding approval as additional enrollment and demographic information becomes available.

SECTION IV

GENERAL CONDITIONS FOR CONSTRUCTION FUNDING (F)

In the FY 2021 CIP, the Interagency Commission on School Construction approved funding for 111 projects as shown in Section XII, and in the "Detailed Program by School System" section following Section XVI.

For a project to qualify for construction funding:

1. There must be available State funds and an assurance that local funds will be provided to continue the construction, even if State funds are not available in a future fiscal year.
2. To ensure that State funds will be expended in the fiscal year in which they are allocated:
 - a. For major projects and certain smaller projects, a schematic design or other suitable evidence of project progress must generally have been submitted prior to September 1, 2019, in order for the IAC to have approved the project in December 2019, and prior to March 1, 2020, in order to get final IAC approval of the projects in May 2020.

- b. For major projects and certain smaller projects, a design development submission or other suitable evidence of project progress must generally have been completed prior to November 1, 2019, in order to receive IAC approval in December 2019 and prior to April 1, 2020, in order to get IAC approval of the project in May 2020.
 - c. Monthly or quarterly cash flow projections (“draw schedules”) must be submitted for most projects to show the amount of State funding that will be required in the fiscal year.
3. Renovations, limited renovations, or additions to existing schools, the replacement of obsolete schools, and the construction of new schools must be justified on the basis of a continuing stable enrollment appropriate to the proposed capacity of the project *and* the specific needs and identifiable problems which the school is proposed to address. For proposed new or replacement schools, nearby or adjacent schools of the same grade structure must be projected to be fully utilized within seven years of the date of submission of the request. Projects to consolidate existing schools must be justified on the basis of enrollment, facility needs, operating budget and capital cost savings, and program advantages. Projects that are justified based solely on educational programs must still demonstrate that they will enjoy continuous and long-term utilization.

SECTION V

GENERAL CONDITIONS FOR FUNDING OF RELOCATABLE CLASSROOM PROJECTS (REL)

Funding for the movement of State-owned relocatable classrooms may be requested in the CIP. Approvals are subject to project justification and the availability of State units. Funds for the repair or demolition of State-owned relocatable classrooms may be applied for separately, not as part of the Public School Construction Capital Improvement Program. LEAs may also request that State-owned relocatable classrooms be reverted to the State; if the unit or units are not required by another school system, they are disposed of by the Department of General Services. No such requests were made for either the relocation or reversion of State-owned relocatable units in the FY 2021 CIP.

Currently, seven (7) LEAs are using 121 relocatable classrooms owned by the State with an average age of 42 years, of which ninety-nine (99) are being used for instructional purposes and twenty-two (22) for non-instructional purposes. One State-owned relocatable was demolished this past summer at the request of Washington County with the approval of the IAC.

SECTION VI

GENERAL CONDITIONS FOR FUNDING OF SYSTEMIC RENOVATION PROJECTS (SR)

Systemic renovations allow for the replacement or upgrade of a building system in a school facility. These projects are distinguished from routine maintenance activities and repairs, which are generally funded through the local operating budget. The purpose of a systemic renovation project is to extend the useful life of a facility by improving selective major building systems while avoiding the cost and educational disruption of a building-wide renovation. Generally, the school should show a projected utilization of at least 60 % in order to be justified for the approval of a systemic renovation project. The installation, replacement, or renovation of the following types of building systems are eligible for State funding, as well as reasonably related components of other building systems:

- Architectural and Structural - Roofs, wall systems, windows, and ceiling systems. Roof replacement projects will not be recommended if the request is not supported by the three most recent semi-annual roof inspection reports;
- Building Envelope - Any combination of two or more of the following building systems or elements: roofing and flashing, exterior walls, windows, louvers, and exterior doors;

- Ceiling-and-Above Interior Systems - Any combination of two or more of the following building systems or elements that occupy the space at and above the ceiling plane: electrical, lighting, HVAC, plumbing, fire safety, data systems, structural, ceiling and related finishes;
- Mechanical - Heating, ventilating, and air conditioning (HVAC) systems or mechanical sub-systems, including window and through-wall air conditioners, as well as components of systems, HVAC control systems, and building automation systems (BAS);
- Plumbing - Water supply, sanitary, and storm water systems;
- Electrical - Electrical system, including lighting, switchgear, generators, and distribution systems;
- Fire Safety - Fire alarm, and fire detection systems;
- Conveying Systems - An elevator or vertical lift system; and
- Communication Systems - Data, voice, and video systems.

Each project will:

- Have a construction cost of at least \$200,000 (\$100,000 if an LEA has only one SR request);
- Typically address a single category of work (HVAC, lighting, etc.), although combinations of categories are considered for funding when integrally related and justified. Combining interconnected eligible categories of systemic renovations is often necessary and is encouraged to achieve a comprehensive approach to building renewal.

The IAC may deny funding for a systemic renovation project in a school facility that has not been adequately maintained or is in a building in which the projected enrollment is less than 60% of the State Rated Capacity, or for a systemic renovation that has proceeded to construction prior to design review by the Department of General Services or to solicitation prior to approval by the IAC in an annual CIP.

SECTION VII

LOCAL FUNDING

Certain project and funding costs require local funding as follows:

1. Design - The LEA is solely responsible for the selection and payment of all design consultants. Included in the A/E agreement should be provisions for life cycle cost studies, cost control, energy conservation measures, value engineering studies, submission for State reviews and approvals, and calculation of the tentative construction budget at various stages of design.
2. Construction Management – The LEA is solely responsible for ensuring that a school construction project is constructed in accordance with the approved drawing and specifications, local and State code requirements, and good construction practices. Funding to support this function, including proper LEA staffing, testing, and on-site inspection during construction, must be provided through the local school board budget or from other, non-State sources.
3. Construction
 - a. Eligible Costs: Local Share - Each project recommended for planning requires the local board of education to share in the eligible costs of construction. See Section IX for prior fiscal year and current State-local share percentages.
 - b. Ineligible Costs - The LEA is required to provide local funds for the payment of ineligible construction-related soft costs such as: building permits; local building inspections; test borings; topographical surveys; bid advertising; document reproduction; sewer and water connection charges; excess building and site development costs over State allowance (including square footage in excess of the

State gross area allowance); movable furniture, furnishings and equipment; change orders; and other miscellaneous ineligible costs.

SECTION VIII

SUMMARY OF FINANCIAL TRANSACTIONS
AS OF May 31, 2020

Fund Authorizations:			
Bond Loans 1971 through 2020		\$ 8,153,198,621	
Pay-Go Funds FY' 89-FY' 91, FY' 95-FY' 09		645,144,372	(a)
Supplemental Appropriation FY 2012		47,500,000	(b)
Supplemental TIMS (MLPFA)- FY'01-FY' 02		45,965,452	
		<u>\$ 8,891,808,445</u>	
Approved Contracts:			
Construction	6,793,427,494		(c)
Design Review Services	2,813,218		
Architect/Engineer	64,405,711		
Related & Systemic	1,339,285,043		(d)
Equipment	<u>90,480,927</u>	8,290,412,393	
Special Projects:			
Relocatables	15,166,456		(e)
Research	174,989		
Bond Sale Expense	825,655		
One Percent Payment	1,525,197		(f)
Maintenance	<u>96,525</u>	17,788,822	
Allocated but not contracted		573,594,712	
Prior Year Appropriations:			
Fiscal Year 2010 REL	247,931		
2012 SA	125,052		
2016 NPASP	10,621		
2019	839,796		
2019 BC HVAC	329,392		
2020	3,166,056		
2021	5,293,670		
		<u>10,012,518</u>	
		<u>\$ 8,891,808,445</u>	

Notes:

- (a) The 1996 PG Relocatable Appropriation was reduced by \$4,643 and the 2008 PG was reduced by \$1,985 because the accounts remained uncontracted 7 years
- (b) Supplemental Appropriation to specific LEA's for projects approved by the Board of Public Works.
- (c) Major projects only; does not include relocatable classrooms.
- (d) "Related" represents costs incidental to construction projects, such as bid advertisement, which was eligible prior to 1981.
- (e) This amount is not included in Approved Contracts-Construction above.
- (f) This represents a "one time only" exception to use bond money to pay LEA wages and salaries at this program's inception for employees who provide technical services related to capital improvement projects.

SECTION IX

STATE-LOCAL COST SHARE PERCENTAGES

The FY 2021 State Local Cost Share Percentages were approved by the IAC on September 12, 2019 and remained at the FY 2020 levels for LEAs that would have experienced a decreased State Share Percentage under the calculation formula.

<u>County</u>	<u>FY20</u>	<u>FY21/22</u>
Allegany	85%	89%
Anne Arundel	50%	50%
Baltimore City	93%	96%
Baltimore County	56%	57%
Calvert	53%	53%
Caroline	81%	87%
Carroll	59%	59%
Cecil	66%	66%
Charles	61%	65%
Dorchester	76%	82%
Frederick	64%	64%
Garrett	50%	50%
Harford	63%	63%
Howard	55%	55%
Kent	50%	50%
Montgomery	50%	50%
Prince George's	70%	70%
Queen Anne's	51%	51%
St. Mary's	58%	58%
Somerset	100%	100%
Talbot	50%	50%
Washington	71%	79%
Wicomico	97%	100%
Worcester	50%	50%
Maryland School for the Blind	93%	93%

SECTION X

PAST AND PROJECTED SCHOOL CONSTRUCTION COSTS

(\$/sq. ft.)

<u>Bid Date</u>	<u>Building</u> (Construction, without site development)	<u>Construction</u> (Construction, with site development)
July 2003	\$138.75	\$155.40
July 2004	\$140.00	\$156.80
July 2005	\$157.00	\$175.84
July 2006	\$190.00	\$212.80
July 2007	\$215.00	\$240.80
July 2008	\$215.00	\$240.80
July 2009	\$224.00	\$250.88
July 2010	\$200.00	\$224.00
July 2011	\$200.00	\$224.00
July 2012	\$207.00	\$231.84
July 2013	\$215.00	\$240.80
July 2014	\$224.00	\$250.88
July 2015	\$233.00	\$260.96
July 2016	\$282.00	\$335.58
July 2017	\$293.00*	\$348.67
July 2018	\$302.00	\$360.00
July 2019	\$318.00**	\$378.00
July 2020	\$329.00	\$391.51

*The Interagency Commission on School Construction reexamined and revised the July 2017 cost per sf for school construction on March 29, 2017.

**The IAC revised the July 2019 cost per sf for school construction on August 30, 2018.

SECTION XI
SUMMARY OF FISCAL YEAR 2021 CAPITAL IMPROVEMENT PROGRAM
AS OF MAY 31, 2020

Local Educational Agency	Capital Budget Request for FY 2021	No. of Planning Projects Requested	No. of Funding Projects Requested	No. of Planning Projects Approved	No. of Funding Projects Approved	Prior Year Authorizations Unreserved Funds	Prior Year Authorizations Reserved Funds	Prior Year EGRC Reserved Funds	FY 2021 EGRC Allocation	FY 2021 New Authorization	Total FY 2021 Allocation	Total Allocations FY 1972-FY 2021
Allegany	\$1,179,567	0	3	0	3	\$0	\$0	\$0	\$0	\$1,179,567	\$1,179,567	\$148,478,559
Anne Arundel	\$52,178,000	7	10	4	6	\$0	\$277,130	\$0	\$9,176,590	\$27,817,359	\$37,271,079	\$792,482,047
Baltimore	\$219,778,349	11	22	2	4	\$0	\$0	\$0	\$9,468,851	\$30,703,968	\$40,172,819	\$933,108,117
Calvert	\$3,851,500	1	4	1	4	\$0	\$173,604	\$0	\$0	\$3,677,896	\$3,851,500	\$206,594,380
Caroline	\$16,885,000	0	1	0	1	\$0	\$0	\$0	\$1,695,701	\$11,816,845	\$13,512,546	\$104,695,822
Carroll	\$22,501,000	1	6	1	2	\$0	\$2,225,293	\$0	\$0	\$7,257,601	\$9,482,894	\$262,358,801
Cecil	\$5,563,000	1	4	1	3	\$0	\$22,987	\$0	\$0	\$3,633,000	\$3,655,987	\$165,199,661
Charles	\$32,087,299	3	9	0	3	\$0	\$0	\$0	\$9,752,962	\$9,752,962	\$9,752,962	\$311,972,156
Dorchester	\$5,829,387	0	3	0	3	\$0	\$0	\$0	\$0	\$3,911,890	\$3,911,890	\$123,330,935
Frederick	\$23,500,357	2	12	1	10	\$0	\$25,145	\$0	\$4,787,877	\$17,334,075	\$22,147,097	\$491,165,533
Garrett	\$1,335,000	0	1	0	1	\$0	\$191,146	\$0	\$0	\$1,143,854	\$1,335,000	\$54,566,254
Harford	\$13,941,941	0	3	0	3	\$0	\$759,150	\$0	\$0	\$11,677,628	\$12,436,778	\$387,508,711
Howard	\$44,402,793	1	4	0	2	\$0	\$803,195	\$1,880,700	\$14,138,305	\$16,875,904	\$33,698,104	\$573,033,382
Kent	\$2,992,760	0	2	0	2	\$0	\$700,000	\$0	\$0	\$2,292,760	\$2,992,760	\$25,212,244
Montgomery	\$110,398,000	18	26	7	21	\$0	\$62,846	\$28,880	\$22,295,928	\$31,745,707	\$54,133,361	\$1,271,926,240
Prince George's	\$48,543,000	5	5	1	5	\$0	\$3,553,749	\$444,154	\$13,436,748	\$28,926,912	\$46,361,563	\$990,212,383
Queen Anne's	\$2,490,900	0	4	0	4	\$0	\$52,073	\$0	\$0	\$950,900	\$1,002,973	\$89,713,639
St. Mary's	\$5,331,000	0	2	0	2	\$0	\$0	\$0	\$0	\$5,329,981	\$5,329,981	\$199,989,373
Somerset	\$2,900,000	1	1	0	1	\$0	\$0	\$0	\$0	\$2,900,000	\$2,900,000	\$115,096,283
Talbot	\$3,706,960	0	1	0	1	\$0	\$0	\$0	\$0	\$2,972,571	\$2,972,571	\$50,166,224
Washington	\$11,106,543	0	5	0	5	\$0	\$0	\$0	\$0	\$7,509,889	\$7,509,889	\$210,948,720
Wicomico	\$11,792,445	1	2	1	1	\$0	\$778	\$0	\$0	\$9,172,108	\$9,172,886	\$227,462,336
Worcester	\$1,275,000	1	1	1	1	\$0	\$0	\$0	\$0	\$1,275,000	\$1,275,000	\$78,545,037
Baltimore City	\$78,847,000	2	28	2	22	\$0	\$25,878,000	\$0	\$0	\$27,769,000	\$53,647,000	\$974,288,858
Md. School for the Blind	\$8,201,496	0	1	0	1	\$0	\$0	\$0	\$0	\$6,578,953	\$6,578,953	\$74,935,734
State Projects	\$500,000	0	0	0	0	\$0	\$0	\$0	\$0	\$500,000	\$500,000	\$18,804,498
Subtotal	\$731,118,297	55	160	22	111	\$0	\$34,725,096	\$2,353,734	\$75,000,000	\$274,706,330	\$386,785,160	\$8,881,795,927

Unallocated Statewide Appropriation												\$5,862,222 (1)
Baltimore City HVAC Reserved Appropriation												329,392 (2)
Supplemental Appropriation (SA) Balance												125,052
Unallocated Appropriation Reserved for Specific LEAs												3,695,852 (3)
Total	\$731,118,297	55	160	22	111							\$ 8,891,808,445 (4)

Total FY 2021 School Construction Program	215 Projects requested	133 Projects approved
---	---------------------------	--------------------------

- Notes:
- (1) The Unallocated Statewide Appropriation consists of FY 2021 Unallocated New Authorization (\$5,293,670), funding reserved for DGS Design Consultant Fees (\$500,000) Emergency Repairs (\$310,000), Relocatable Repairs (\$247,931), and Senator James E. "Ed" DeGrange Non-Public Aging Schools appropriation transferred to the Capital Improvement Program pursuant to Chapter 14, Laws of Maryland 2019 (HB101) (\$10,621).
 - (2) Unallocated appropriation held in reserve for Baltimore City Public Schools HVAC projects.
 - (3) Funds held in reserve for LEAs from fiscal years 2006 - 2008 and 2010 - 2020 as of May 31, 2020.
 - (4) Does not include \$1.6 million in Capital Improvement Program funds reserved for Aging School Program in FY 2005 and FY 2006.

SECTION XII

SUMMARY OF PROJECT REQUESTS & APPROVALS
FY 2021 Maryland Public School Construction Capital Improvement Program
Interagency Commission on School Construction
as of May 14, 2020

<u>Project Name</u>	<u>Priority</u>	<u>Project Category</u>	<u>Status</u>	<u>FY 2021 Requests</u>	<u>Prior Year and FY 21 EGRC Allocation</u>	<u>FY 2021 State Allocation</u>	<u>State Allocation</u>	
<u>Allegany County</u>								
Center for Career & Technical Education	1	SR: Roof - Phase I	A	100,567	-	100,567	100,567	b
Washington Middle	2	SR: Boilers	A	93,000	-	93,000	93,000	b
Braddock Middle	3	SR: Boilers	A	986,000	-	986,000	986,000	e
				<u>\$1,179,567</u>	<u>\$-</u>	<u>\$1,179,567</u>	<u>\$1,179,567</u>	
<u>Anne Arundel County</u>								
Maryland City Elementary	1	SR: Roof	A	857,000	-	857,000	857,000	e
Edgewater Elementary	2	Renovation/Addition	A	3,685,000	-	3,685,000	3,685,000	b
Tyler Heights Elementary	3	Renovation/Addition	A	1,472,000	-	1,472,000	1,472,000	b
Richard Henry Lee Elementary	4	Renovation/Addition	A	4,190,000	-	4,190,000	4,190,000	b
Arundel Middle	5	Addition	A	LP	-	-	LP	
Arundel Middle	6	Addition	A	3,875,000	-	3,875,000	3,875,000	e
Crofton Area High	7	New	A	27,903,000	9,176,590	14,015,489	23,192,079	p2
North County High	8	SR: HVAC/Fire Safety	B	7,625,000	-	-	-	
North County High	9	SR: Electrical	B	65,000	-	-	-	
Sunset Elementary	10	K Addition	A	LP	-	-	LP	
Sunset Elementary	11	K Addition	B	1,255,000	-	-	-	
Van Bokkelen Elementary	12	K Addition	A	LP	-	-	LP	
Van Bokkelen Elementary	13	K Addition	B	1,251,000	-	-	-	
Quarterfield Elementary	14	Replacement	A	LP	-	-	LP	
Hillsmere Elementary	15	Replacement	B	LP	-	-	-	
Rippling Woods Elementary	16	Replacement	B	LP	-	-	-	
Old Mill West High	17	New	B	LP	-	-	-	
				<u>\$52,178,000</u>	<u>\$9,176,590</u>	<u>\$28,094,489</u>	<u>\$37,271,079</u>	
<u>Baltimore</u>								
Berkshire Elementary	1	Replacement	A	10,031,349	-	9,290,349	9,290,349	b
Colgate Elementary	2	Replacement	A	14,624,000	680,000	12,840,000	13,520,000	e
Chadwick Elementary	3	Replacement	A	18,429,000	7,534,381	8,573,619	16,108,000	e
Northeast Area @ Ridge Road Elementary	4	New	A	LP	-	-	LP	
Northeast Area @ Ridge Road Elementary	5	New	A	19,095,000	1,254,470	-	1,254,470	p1
Bedford Elementary	6	Replacement	A	LP	-	-	LP	
Bedford Elementary	7	Replacement	B	19,017,000	-	-	-	
Summit Park Elementary	8	Replacement	B	LP	-	-	-	
Summit Park Elementary	9	Replacement	B	19,017,000	-	-	-	
Northeast Area Middle	10	New	B	LP	-	-	-	
Northeast Area Middle	11	New	B	41,526,000	-	-	-	
Pine Grove Middle	12	Renovation/Addition	B	LP	-	-	-	
Pine Grove Middle	13	Renovation/Addition	B	11,708,000	-	-	-	
Red House Run Elementary	14	Replacement	B	LP	-	-	-	
Red House Run Elementary	15	Replacement	C	19,095,000	-	-	-	

Approval Status:

A - IAC approval of planning or funding.
 B - Deferred, but eligible for local planning or construction funding.
 C - Deferred, and not currently eligible for planning or funding approval.
 D - Denied, and not eligible for planning or funding approval.

Abbreviations:

K - Kindergarten
 SR - Systemic Renovations

Funding Code:

b Balance of multi-year funds
 p Partial funds
 e Entire funding for project

SECTION XII - SUMMARY OF PROJECT REQUESTS & APPROVALS (May 14, 2020) - cont'd

<u>Project Name</u>	<u>Priority</u>	<u>Project Category</u>	<u>Status</u>	<u>FY 2021 Requests</u>	<u>Prior Year and FY 21 EGRC Allocation</u>	<u>FY 2021 State Allocation</u>	<u>State Allocation</u>	
<u>Baltimore - cont'd</u>								
Deer Park Elementary	16	Replacement	B	LP	-	-	-	
Deer Park Elementary	17	Replacement	C	19,251,000	-	-	-	
Scotts Branch Elementary	18	Renovation/Addition	B	LP	-	-	-	
Scotts Branch Elementary	19	Renovation/Addition	C	13,854,000	-	-	-	
Dulaney High	20	Replacement	C	LP	-	-	-	
Towson High	21	Replacement	C	LP	-	-	-	
Lansdowne High	22	Replacement	C	LP	-	-	-	
Rosedale Center	23	SR: Roof	B	980,000	-	-	-	
Parkville High	24	SR: Roof	B	2,594,000	-	-	-	
Fort Garrison Elementary	25	SR: Roof	B	963,000	-	-	-	
Loch Raven High	26	SR: Roof	B	1,317,000	-	-	-	
Stoneleigh Elementary	27	SR: Roof	B	741,000	-	-	-	
Holabird Middle	28	SR: Roof	B	2,451,000	-	-	-	
Lansdowne Middle	29	SR: Roof	B	1,465,000	-	-	-	
Milford Mill Academy	30	SR: Boilers	B	542,000	-	-	-	
Dundalk Middle	31	SR: Boilers	C	456,000	-	-	-	
Loch Raven High	32	SR: Chillers	B	1,197,000	-	-	-	
Perry Hall High	33	SR: Chiller	B	1,425,000	-	-	-	
				<u>\$219,778,349</u>	<u>\$9,468,851</u>	<u>\$30,703,968</u>	<u>\$40,172,819</u>	
<u>Calvert County</u>								
Beach Elementary	1	Replacement	A	LP				
Patuxent High	2	SR: HVAC	A	516,000	-	516,000	516,000	b
Northern High	3	SR: Sewage Plant	A	848,000	-	848,000	848,000	e
Mt. Harmony Elementary	4	SR: HVAC	A	821,500	-	821,500	821,500	e
Southern Middle	5	SR: HVAC - Phase I	A	1,666,000	-	1,666,000	1,666,000	p1
				<u>\$3,851,500</u>	<u>\$-</u>	<u>\$3,851,500</u>	<u>\$3,851,500</u>	
<u>Caroline County</u>								
Greensboro Elementary	1	Replacement	A	16,885,000	1,695,701	11,816,845	13,512,546	p2
				<u>\$16,885,000</u>	<u>\$1,695,701</u>	<u>\$11,816,845</u>	<u>\$13,512,546</u>	
<u>Carroll County</u>								
Carroll County Career & Technology Center	1	Renovation/Addition	A	LP				
Carroll County Career & Technology Center	2	Renovation/Addition	A	15,000,000	-	9,000,000	9,000,000	p1
Spring Garden Elementary	3	SR: HVAC	B	3,160,000	-	-	-	
Winfield Elementary	4	SR: Roof	A	1,380,000	-	482,894	482,894	p1
Spring Garden Elementary	5	SR: Roof	B	1,103,000	-	-	-	
South Carroll High	6	SR: Windows	B	929,000	-	-	-	
Westminster High	7	SR: Windows	B	929,000	-	-	-	
				<u>\$22,501,000</u>	<u>\$-</u>	<u>\$9,482,894</u>	<u>\$9,482,894</u>	
<u>Cecil County</u>								
Chesapeake City Elementary	1	Replacement	A	3,283,000	-	3,283,000	3,283,000	p2
Cecil Manor Elementary	2	SR: HVAC	A	1,597,000	-	22,987	22,987	p1
Leeds Elementary	3	SR: Boiler	A	350,000	-	350,000	350,000	e
Bohemia Manor Middle/High	4	SR: Chiller/Cooling Tower	B	333,000	-	-	-	

Approval Status:

A - IAC approval of planning or funding.
 B - Deferred, but eligible for local planning or construction funding.
 C - Deferred, and not currently eligible for planning or funding approval.
 D - Denied, and not eligible for planning or funding approval.

Abbreviations:

K - Kindergarten
 SR - Systemic Renovations

Funding Code:

b Balance of multi-year funds
 p Partial funds
 e Entire funding for project

SECTION XII - SUMMARY OF PROJECT REQUESTS & APPROVALS (May 14, 2020) - cont'd

<u>Project Name</u>	<u>Priority</u>	<u>Project Category</u>	<u>Status</u>	<u>FY 2021 Requests</u>	<u>Prior Year and FY 21 EGRC Allocation</u>	<u>FY 2021 State Allocation</u>	<u>State Allocation</u>	
<u>Cecil County - cont'd</u>								
North East Middle	5	Replacement	A	LP <u>\$5,563,000</u>	<u>\$-</u>	<u>\$3,655,987</u>	<u>\$3,655,987</u>	LP
<u>Charles County</u>								
Dr. James Craik Elementary	1	K & PreK Addition/Renovation	A	131,299	-	131,299	131,299	b
Benjamin Stoddert Middle	2	Renovation/Addition	A	8,115,000	-	8,115,000	8,115,000	p2
Eva Turner Elementary	3	Renovation/Addition	A	9,937,000	-	1,506,663	1,506,663	p2
John Hanson Middle	4	SR: Roof	B	1,794,000	-	-	-	
Maurice J. McDonough High	5	Renovation/Addition	B	4,550,000	-	-	-	
Westlake High	6	SR: Roof	B	1,981,000	-	-	-	
Indian Head Elementary	7	SR: Boilers	B	712,000	-	-	-	
J. P. Ryon Elementary	8	K & PreK Addition	B	2,272,000	-	-	-	
Malcolm Elementary	9	K & PreK Addition/Renovation	B	2,595,000	-	-	-	
New Elementary #23	10	New	C	LP	-	-	-	
Walter J. Mitchell Elementary	11	K & PreK Addition/Renovation	C	LP	-	-	-	
J. C. Parks Elementary	12	K & PreK Addition/Renovation	B	LP	-	-	-	
				<u>\$32,087,299</u>	<u>\$-</u>	<u>\$9,752,962</u>	<u>\$9,752,962</u>	
<u>Dorchester County</u>								
Vienna Elementary	1	SR: Roof	A	335,387	-	335,387	335,387	b
Sandy Hill Elementary	2	SR: Roof	A	1,558,000	-	1,558,000	1,558,000	e
Cambridge/South Dorchester High	3	SR: Roof	A	3,936,000	-	2,018,503	2,018,503	p1
				<u>\$5,829,387</u>	<u>\$-</u>	<u>\$3,911,890</u>	<u>\$3,911,890</u>	
<u>Frederick County</u>								
Butterfly Ridge Elementary	1	New	A	974,000	-	974,000	974,000	b
Urbana Elementary	2	Replacement	A	5,265,877	1,265,877	4,000,000	5,265,877	p2
Blue Heron (East Frederick County Area) Elementary	3	New	A	4,000,000	-	4,000,000	4,000,000	p1
Rock Creek School	4	Replacement	A	5,000,000	-	5,000,000	5,000,000	p2
Waverley Elementary	5	Replacement	A	6,000,000	1,413,840	3,385,220	4,799,060	p1
Brunswick Elementary	6	Replacement	A	LP	-	-	LP	
Governor Thomas Johnson High	7	SR: Roof	A	448,000	448,000	-	448,000	e
Middletown High	8	SR: Roof	A	168,320	168,320	-	168,320	e
Heather Ridge School	9	SR: Roof	A	579,200	579,200	-	579,200	e
Ballenger Creek Middle	10	SR: Roof	A	361,600	361,600	-	361,600	e
Lincoln Elementary "A"	11	SR: Roof	A	551,040	551,040	-	551,040	e
Myersville Elementary	12	SR: UST	D	85,120	-	-	-	
Liberty Elementary	13	Replacement	B	LP	-	-	-	
Governor Thomas Johnson High	14	SR: Security Upgrades	D	67,200	-	-	-	
				<u>\$23,500,357</u>	<u>\$4,787,877</u>	<u>\$17,359,220</u>	<u>\$22,147,097</u>	

Approval Status:

A - IAC approval of planning or funding.
 B - Deferred, but eligible for local planning or construction funding.
 C - Deferred, and not currently eligible for planning or funding approval.
 D - Denied, and not eligible for planning or funding approval.

Abbreviations:

K - Kindergarten
 SR - Systemic Renovations

Funding Code:

b Balance of multi-year funds
 p Partial funds
 e Entire funding for project

SECTION XII - SUMMARY OF PROJECT REQUESTS & APPROVALS (May 14, 2020) - cont'd

<u>Project Name</u>	<u>Priority</u>	<u>Project Category</u>	<u>Status</u>	<u>FY 2021 Requests</u>	<u>Prior Year and FY 21 EGRC Allocation</u>	<u>FY 2021 State Allocation</u>	<u>State Allocation</u>	
<u>Garrett County</u>								
Southern High	1	SR: Building Envelope	A	1,335,000	-	1,335,000	1,335,000	e
				<u>\$1,335,000</u>	<u>\$-</u>	<u>\$1,335,000</u>	<u>\$1,335,000</u>	
<u>Harford County</u>								
Hickory Elementary	1	SR: Roof	A	1,587,941	-	1,587,941	1,587,941	b
Joppatowne High	2	Limited Renovation	A	8,070,000	-	8,070,000	8,070,000	p1
Bel Air Middle	3	SR: Roof	A	4,284,000	-	2,778,837	2,778,837	p1
				<u>\$13,941,941</u>	<u>\$-</u>	<u>\$12,436,778</u>	<u>\$12,436,778</u>	
<u>Howard County</u>								
New High School #13	1	New	A	28,000,000	11,124,096	16,875,904	28,000,000	p1
Talbot Springs Elementary	2	Replacement	A	6,000,000	4,894,909	803,195	5,698,104	p1
Hammond High	3	Renovation/Addition	B	LP	-	-	-	
Hammond High	4	Renovation/Addition	B	10,000,000	-	-	-	
Hammond Middle	5	SR: Boilers	B	402,793	-	-	-	
				<u>\$44,402,793</u>	<u>\$16,019,005</u>	<u>\$17,679,099</u>	<u>\$33,698,104</u>	
<u>Kent County</u>								
Rock Hall Elementary	1	SR: HVAC/Fire Safety	A	76,760	-	76,760	76,760	b
Galena Elementary	2	Addition/SR	A	2,916,000	-	2,916,000	2,916,000	e
				<u>\$2,992,760</u>	<u>\$-</u>	<u>\$2,992,760</u>	<u>\$2,992,760</u>	
<u>Montgomery County</u>								
Tilden Middle/Rock Terrace School	1	Replacement	A	15,920,000	2,315,074	12,399,706	14,714,780	b
Kingsview Middle	2	SR: Roof	A	867,000	-	867,000	867,000	e
Quince Orchard High	3	SR: HVAC	A	624,000	-	624,000	624,000	e
Clarksburg Elementary	4	SR: HVAC	A	562,000	-	562,000	562,000	e
Westland Middle	5	SR: Roof	A	558,000	-	558,000	558,000	e
Bethesda Elementary	6	SR: Roof	A	518,000	-	518,000	518,000	e
Meadow Hall Elementary	7	SR: HVAC	A	499,000	-	499,000	499,000	e
Ronald McNair Elementary	8	SR: HVAC	A	487,000	-	487,000	487,000	e
John Poole Middle	9	SR: Roof	A	479,000	-	479,000	479,000	e
Brookhaven Elementary	10	SR: HVAC	A	474,000	-	474,000	474,000	e
Argyle Middle	11	SR: Roof	A	428,000	-	428,000	428,000	e
Damascus Elementary	12	SR: Roof	A	353,000	-	353,000	353,000	e
Lucy V. Barnsley Elementary	13	SR: Roof	A	307,000	-	307,000	307,000	e
S. Christa McAuliffe Elementary	14	Renovation	A	2,110,000	-	1,541,000	1,541,000	e
Maryvale Elementary/Carl Sandburg School	15	Replacement	A	12,436,000	2,929,373	9,506,627	12,436,000	e
Ashburton Elementary	16	Addition/Renovation	A	LP			LP	
Ashburton Elementary	17	Addition/Renovation	A	1,264,000	73,000	-	73,000	e
Takoma Park Middle	18	Addition/Renovation	A	LP			LP	
Takoma Park Middle	19	Addition/Renovation	A	4,957,000	4,957,000	-	4,957,000	e
Pine Crest Elementary	20	Addition	A	LP			LP	
Pine Crest Elementary	21	Addition	A	1,891,000	1,891,000	-	1,891,000	e
Montgomery Knolls Elementary	22	Addition/Renovation	A	LP			LP	

Approval Status:

A - IAC approval of planning or funding.
 B - Deferred, but eligible for local planning or construction funding.
 C - Deferred, and not currently eligible for planning or funding approval.
 D - Denied, and not eligible for planning or funding approval.

Abbreviations:

K - Kindergarten
 SR - Systemic Renovations

Funding Code:

b Balance of multi-year funds
 p Partial funds
 e Entire funding for project

SECTION XII - SUMMARY OF PROJECT REQUESTS & APPROVALS (May 14, 2020) - cont'd

<u>Project Name</u>	<u>Priority</u>	<u>Project Category</u>	<u>Status</u>	<u>FY 2021 Requests</u>	<u>Prior Year and FY 21 EGRC Allocation</u>	<u>FY 2021 State Allocation</u>	<u>State Allocation</u>	
Montgomery County - cont'd								
Montgomery Knolls Elementary	23	Addition/Renovation	A	1,445,000	1,445,000	-	1,445,000	e
Walt Whitman High	24	Addition/Renovation	A	LP			LP	
Walt Whitman High	25	Addition/Renovation	A	6,133,000	3,927,780	2,205,220	6,133,000	e
Thomas W. Pyle Middle	26	Addition/Renovation	A	LP			LP	
Thomas W. Pyle Middle	27	Addition/Renovation	A	5,099,000	4,786,581	-	4,786,581	p1
Piney Branch Elementary	28	Addition	C	LP	-	-	-	
Piney Branch Elementary	29	Addition	C	836,000	-	-	-	
Col E. Brooke Lee Middle	30	Replacement	A	LP			LP	
Col E. Brooke Lee Middle	31	Replacement	B	13,043,000	-	-	-	
Silver Spring International Middle	32	Addition	B	LP	-	-	-	
Silver Spring International Middle	33	Addition	B	7,729,000	-	-	-	
John F. Kennedy High	34	Addition	B	LP	-	-	-	
John F. Kennedy High	35	Addition	B	4,471,000	-	-	-	
Charles W. Woodward High (formerly Tilden Middle)	36	Replacement	C	LP	-	-	-	
Charles W. Woodward High (formerly Tilden Middle)	37	Replacement	C	26,908,000	-	-	-	
Clarksburg Cluster #9 Elementary	38	New	C	LP	-	-	-	
Cresthaven Elementary	39	Addition	B	LP	-	-	-	
Dufief Elementary	40	Replacement	B	LP	-	-	-	
Gaithersburg Cluster #9 Elementary	41	New	C	LP	-	-	-	
Roscoe Nix Elementary	42	Addition	C	LP	-	-	-	
Woodlin Elementary	43	Replacement	C	LP	-	-	-	
Northwood High	44	Replacement	B	LP	-	-	-	
				\$110,398,000	\$22,324,808	\$31,808,553	\$54,133,361	
Prince George's County								
William Wirt Middle	1	Replacement	A	12,029,000	-	12,029,000	12,029,000	p2
New Glenridge Area #2 Middle	2	New	A	12,059,000	-	12,059,000	12,059,000	p2
Cherokee Lane Elementary	3	Replacement	A	8,957,000	4,697,691	4,259,309	8,957,000	b
William S. Schmidt Environmental Education Center	4	Renovation/Addition	A	8,498,000	8,498,000	-	8,498,000	p1
Suitland High	5	Replacement	A	LP			LP	
High Point High	6	Renovation/Addition	C	LP	-	-	-	
New Northern Area (Adelphi) High	7	New	C	LP	-	-	-	
Cool Spring Elementary	8	Renovation/Addition	C	LP	-	-	-	
International High School at Langley Park	9	New	B	LP	-	-	-	
Charles Herbert Flowers High	10	SR: HVAC	A	7,000,000	685,211	4,133,352	4,818,563	p1
				\$48,543,000	\$13,880,902	\$32,480,661	\$46,361,563	
Queen Anne's County								
Bayside Elementary	1	SR: Windows/Doors	A	147,900	-	147,900	147,900	e

Approval Status:

A - IAC approval of planning or funding.
 B - Deferred, but eligible for local planning or construction funding.
 C - Deferred, and not currently eligible for planning or funding approval.
 D - Denied, and not eligible for planning or funding approval.

Abbreviations:

K - Kindergarten
 SR - Systemic Renovations

Funding Code:

b Balance of multi-year funds
 p Partial funds
 e Entire funding for project

SECTION XII - SUMMARY OF PROJECT REQUESTS & APPROVALS (May 14, 2020) - cont'd

<u>Project Name</u>	<u>Priority</u>	<u>Project Category</u>	<u>Status</u>	<u>FY 2021 Requests</u>	<u>Prior Year and FY 21 EGRC Allocation</u>	<u>FY 2021 State Allocation</u>	<u>State Allocation</u>	
<u>Queen Anne's County - cont'd</u>								
Sudlersville Elementary	2	SR: Chiller	A	153,000	-	153,000	153,000	e
Sudlersville Elementary	3	SR: Fire Safety	A	150,000	-	150,000	150,000	e
Kent Island High	4	SR: Roof	A	2,040,000	-	552,073	552,073	p1
				<u>\$2,490,900</u>	<u>\$-</u>	<u>\$1,002,973</u>	<u>\$1,002,973</u>	
<u>St. Mary's County</u>								
Green Holly Elementary	1	SR: HVAC	A	935,000	-	934,981	934,981	b
Dynard Elementary	2	SR: Roof/HVAC	A	4,396,000	-	4,395,000	4,395,000	e
				<u>\$5,331,000</u>	<u>\$-</u>	<u>\$5,329,981</u>	<u>\$5,329,981</u>	
<u>Somerset County</u>								
Crisfield Academy & High	1	SR: Roof	A	2,900,000	-	2,900,000	2,900,000	e
Ewell Elementary	2	Replacement	C	LP	-	-	-	
				<u>\$2,900,000</u>	<u>\$-</u>	<u>\$2,900,000</u>	<u>\$2,900,000</u>	
<u>Talbot County</u>								
Easton Elementary - Dobson Building	1	Replacement	A	3,706,960	-	2,972,571	2,972,571	p3
				<u>\$3,706,960</u>	<u>\$-</u>	<u>\$2,972,571</u>	<u>\$2,972,571</u>	
<u>Washington County</u>								
Sharpsburg Elementary	1	Replacement	A	3,105,000	-	3,104,978	3,104,978	b
South Hagerstown High	2	SR: Roof	A	1,214,543	-	1,214,543	1,214,543	b
Smithsburg High	3	SR: HVAC	A	4,203,000	-	606,368	606,368	p1
Western Heights Middle	4	SR: Roof	A	1,873,000	-	1,873,000	1,873,000	e
North Hagerstown High	5	SR: Chiller	A	711,000	-	711,000	711,000	e
				<u>\$11,106,543</u>	<u>\$-</u>	<u>\$7,509,889</u>	<u>\$7,509,889</u>	
<u>Wicomico County</u>								
Beaver Run Elementary	1	Replacement	A	10,038,445	-	9,172,886	9,172,886	p2
Mardela Middle/High	2	Renovation/Addition	A	LP	-	-	LP	
Westside Intermediate School	3	SR: Roof	B	1,754,000	-	-	-	
				<u>\$11,792,445</u>	<u>\$-</u>	<u>\$9,172,886</u>	<u>\$9,172,886</u>	
<u>Worcester County</u>								
Pocomoke Middle	1	SR: Roof	A	1,275,000	-	1,275,000	1,275,000	e
Stephen Decatur Middle	2	Addition	A	LP	-	-	LP	
				<u>\$1,275,000</u>	<u>\$-</u>	<u>\$1,275,000</u>	<u>\$1,275,000</u>	
<u>Baltimore City</u>								
Armistead Gardens PK-8 #243	1	Addition/Renovation	C	5,000,000	-	-	-	
Maree Garnett Farring PK-8 #203	2	Addition/Renovation	C	2,250,000	-	-	-	
Furley Elementary #206	3	Replacement	A	LP	-	-	LP	

Approval Status:

A - IAC approval of planning or funding.
 B - Deferred, but eligible for local planning or construction funding.
 C - Deferred, and not currently eligible for planning or funding approval.
 D - Denied, and not eligible for planning or funding approval.

Abbreviations:

K - Kindergarten
 SR - Systemic Renovations

Funding Code:

b Balance of multi-year funds
 p Partial funds
 e Entire funding for project

SECTION XII - SUMMARY OF PROJECT REQUESTS & APPROVALS (May 14, 2020) - cont'd

<u>Project Name</u>	<u>Priority</u>	<u>Project Category</u>	<u>Status</u>	<u>FY 2021 Requests</u>	<u>Prior Year and FY 21 EGRC Allocation</u>	<u>FY 2021 State Allocation</u>	<u>State Allocation</u>	
<u>Baltimore City - cont'd</u>								
Northeast Middle #049	4	Renovation	A	LP				LP
Curtis Bay PK-8 #207	5	SR: Vertical Packaged Classroom Air Conditioning Units	D	1,298,000	-	-	-	
Diggs-Johnson Building #162	6	SR: Vertical Packaged Classroom Air Conditioning Units	A	1,632,000	-	1,632,000	1,632,000	e
Harlem Park PK-8 #035	7	SR: HVAC	A	5,952,000	-	5,952,000	5,952,000	e
Franklin Square PK-8 #095	8	SR: HVAC/Windows/Doors	A	6,720,000	-	6,720,000	6,720,000	e
Harlem Park Building #078	9	SR: Elevator	A	446,000	-	446,000	446,000	e
Fallstaff PK-8 #241	10	Renovation - Media Center	A	672,000	-	672,000	672,000	e
Northern Building #402	11	SR: Elevator	A	446,000	-	446,000	446,000	e
Woodhome PK-8 #205	12	SR: Roof	A	2,995,000	-	2,995,000	2,995,000	e
Collington Square PK-8 #097	13	SR: Fire Safety	A	288,000	-	288,000	288,000	e
Curtis Bay PK-8 #207	14	SR: Roof/HVAC	A	6,720,000	-	6,720,000	6,720,000	e
Hazelwood K-8 #210	15	SR: Roof	A	1,897,000	-	1,897,000	1,897,000	e
Furman L. Templeton Elementary #125	16	SR: Roof	A	1,958,000	-	1,958,000	1,958,000	e
Federal Hill Prep PK-5 #045	17	SR: Roof/Structural	A	2,296,000	-	2,296,000	2,296,000	e
Baltimore City College High #480	18	SR: Windows/Doors/Structural	C	12,658,000	-	-	-	
George Washington Elementary #022	19	SR: Roof/Windows/Doors/HVAC/Fire Safety	A	3,994,000	-	3,994,000	3,994,000	e
Highlandtown PK-8 #215	20	SR: Structural/Windows	C	1,498,000	-	-	-	
Barclay PK-8 #054	21	SR: Roof	A	1,267,000	-	1,267,000	1,267,000	e
Dickey Hill PK-8 #201	22	SR: Roof	A	1,555,000	-	1,555,000	1,555,000	e
Thomas Jefferson PK-8 #232	23	SR: Roof	A	1,901,000	-	1,901,000	1,901,000	e
Northern Building #402	24	SR: Roof	A	4,992,000	-	4,992,000	4,992,000	e
Baltimore Polytechnic Institute High #403	25	SR: Elevator	A	446,000	-	446,000	446,000	e
Curtis Bay PK-7 #207	26	SR: Windows/Doors	A	1,298,000	-	1,298,000	1,298,000	e
Roland Park Elementary/Middle #233	27	SR: Structural	C	2,496,000	-	-	-	
Thomas Jefferson PK-8 #232	28	SR: Elevator	A	446,000	-	446,000	446,000	e
Federal Hill Prep PK-5 #045	29	SR: Elevator	A	446,000	-	446,000	446,000	e
Walbrook Building #411	30	SR: Roof	A	5,280,000	-	5,280,000	5,280,000	e
				<u>\$78,847,000</u>	<u>\$-</u>	<u>\$53,647,000</u>	<u>\$53,647,000</u>	
<u>Maryland School for the Blind</u>								
Newcomer, Case and Campbell Halls	1	Renovation/Addition	A	8,201,496	-	6,578,953	6,578,953	p4
				<u>\$8,201,496</u>	<u>\$-</u>	<u>\$6,578,953</u>	<u>\$6,578,953</u>	

Approval Status:

A - IAC approval of planning or funding.
 B - Deferred, but eligible for local planning or construction funding.
 C - Deferred, and not currently eligible for planning or funding approval.
 D - Denied, and not eligible for planning or funding approval.

Abbreviations:

K - Kindergarten
 SR - Systemic Renovations

Funding Code:

b Balance of multi-year funds
 p Partial funds
 e Entire funding for project

SECTION XII - SUMMARY OF PROJECT REQUESTS & APPROVALS (May 14, 2020) - cont'd

<u>Project Name</u>	<u>Priority</u>	<u>Project Category</u>	<u>Status</u>	<u>FY 2021 Requests</u>	<u>Prior Year and FY 21 EGRC Allocation</u>	<u>FY 2021 State Allocation</u>	<u>State Allocation</u>
Statewide							
Design Review				-	-	500,000	500,000
Funding Reserved				-	-	5,293,670	5,293,670
				<u>\$-</u>	<u>\$-</u>	<u>\$5,793,670</u>	<u>\$5,793,670</u>
Totals				<u>\$730,618,297</u>	<u>\$77,353,734</u>	<u>\$314,725,096</u>	<u>\$392,078,830</u>

<u>Summary by Project Type:</u>	<u>Planning</u>		<u>Funding Requests</u>		<u>FY 2019, FY 2020 and FY 2021 CIP EGRC</u>	<u>FY 2021 State Allocation</u>	<u>Total State FY 2021 Allocation</u>	
	<u>Requests</u>	<u>Approved</u>						
Kindergarten	4	2	5	7,504,299	0	131,299	1	131,299
Major Projects	51	20	57	559,527,127	74,560,363	214,188,534	41	288,748,897
Systemic Renovation			98	163,586,871	2,793,371	94,611,593	69	97,404,964
Design			-	-	0	500,000	-	500,000
Funding Reserved			-	-	0	5,293,670	-	5,293,670
Totals	<u>55</u>	<u>22</u>	<u>160</u>	<u>\$730,618,297</u>	<u>\$77,353,734</u>	<u>\$314,725,096</u>	<u>111</u>	<u>\$392,078,830</u>

Approval Status:

- A - IAC approval of planning or funding.
- B - Deferred, but eligible for local planning or construction funding.
- C - Deferred, and not currently eligible for planning or funding approval.
- D - Denied, and not eligible for planning or funding approval.

Abbreviations:

- K - Kindergarten
- SR - Systemic Renovations

Funding Code:

- b Balance of multi-year funds
- p Partial funds
- e Entire funding for project

Interagency Commission on School Construction
Summary of State Future Obligations (including planning approvals)
as of June 1, 2020

LEA	SCHOOL NAME	Planning Request (1)	(2) Estimated Cost NSF/LP Cost	Prior Year Funding	Current FY 2021 Funding from All Funds	Total Authorization from All Years/Funds	Indicates State Future Obligations for Approved Projects to Date (LP/F)
Anne Arundel	Crofton Area High-New	-	\$ 49,746,122	\$ 7,600,523	\$ 23,192,079	\$ 30,792,602	\$ 18,953,520
Anne Arundel	Sunset Elementary-K Addition	LP	\$ 1,255,000	\$ -	\$ -	\$ -	\$ 1,255,000
Anne Arundel	Van Bokkelen Elementary-K Addition	LP	\$ 1,251,000	\$ -	\$ -	\$ -	\$ 1,251,000
Anne Arundel	Quarterfield Elementary-Replacement	LP	\$ 12,837,000	\$ -	\$ -	\$ -	\$ 12,837,000
Anne Arundel Total			\$ 65,089,122	\$ 7,600,523	\$ 23,192,079	\$ 30,792,602	\$ 34,296,520
Baltimore	Northeast Area @ Ridge Road Elementary-New	LP	\$ 19,095,000	\$ -	\$ 1,254,470	\$ 1,254,470	\$ 17,840,530
Baltimore	Bedford Elementary-Replacement	LP	\$ 18,724,000	\$ -	\$ -	\$ -	\$ 18,724,000
Baltimore Total			\$ 37,819,000	\$ -	\$ 1,254,470	\$ 1,254,470	\$ 36,564,530
Calvert	Beach Elementary-Replacement	LP	\$ 10,625,000	\$ -	\$ -	\$ -	\$ 10,625,000
Calvert	Southern Middle-HVAC - Phase I	-	\$ 3,577,500	\$ -	\$ 1,666,000	\$ 1,666,000	\$ 1,911,500
Calvert Total			\$ 14,202,500	\$ -	\$ 1,666,000	\$ 1,666,000	\$ 12,536,500
Caroline	Greensboro Elementary-Replacement	-	\$ 29,707,212	\$ 11,602,627	\$ 13,512,546	\$ 25,115,173	\$ 4,592,039
Caroline Total			\$ 29,707,212	\$ 11,602,627	\$ 13,512,546	\$ 25,115,173	\$ 4,592,039
Carroll	Carroll County Career & Technology Center- Renovation/Addition	LP	\$ 40,820,000	\$ -	\$ 9,000,000	\$ 9,000,000	\$ 31,820,000
Carroll	Winfield Elementary-Roof	-	\$ 1,505,000	\$ -	\$ 482,894	\$ 482,894	\$ 1,022,106
Carroll Total			\$ 42,325,000	\$ -	\$ 9,482,894	\$ 9,482,894	\$ 32,842,106
Cecil	Chesapeake City Elementary-Replacement	-	\$ 10,436,919	\$ 3,870,662	\$ 3,283,000	\$ 7,153,662	\$ 3,283,257
Cecil	Cecil Manor Elementary-HVAC	-	\$ 1,597,200	\$ -	\$ 22,987	\$ 22,987	\$ 1,574,213
Cecil	North East Middle-Replacement	LP	\$ 30,309,000	\$ -	\$ -	\$ -	\$ 30,309,000
Cecil Total			\$ 42,343,119	\$ 3,870,662	\$ 3,305,987	\$ 7,176,649	\$ 35,166,470
Charles	Benjamin Stoddert Middle-Renovation/Addition	-	\$ 25,453,152	\$ 11,848,000	\$ 8,115,000	\$ 19,963,000	\$ 5,490,152
Charles	Eva Turner Elementary-Renovation/Addition	-	\$ 10,780,000	\$ 843,129	\$ 1,506,663	\$ 2,349,792	\$ 8,430,208
Charles	Maurice J. McDonough High-Renovation/Addition	-	\$ 11,601,000	\$ -	\$ -	\$ -	\$ 11,601,000
Charles	J. P. Ryon Elementary-K & PreK Addition	-	\$ 2,272,000	\$ -	\$ -	\$ -	\$ 2,272,000
Charles	Malcolm Elementary-K & PreK Addition/Renovation	-	\$ 2,595,000	\$ -	\$ -	\$ -	\$ 2,595,000

LEA	SCHOOL NAME	Planning Request (1)	(2) Estimated Cost NSF/LP Cost	Prior Year Funding	Current FY 2021 Funding from All Funds	Total Authorization from All Years/Funds	Indicates State Future Obligations for Approved Projects to Date (LP/F)
Charles	T. C. Martin Elementary	-	\$ 13,670,000	-	-	-	\$ 13,670,000
Charles Total			\$ 52,701,152	\$ 12,691,129	\$ 9,621,663	\$ 22,312,792	\$ 44,058,360
Dorchester	Cambridge/South Dorchester High-Roof	-	\$ 3,936,000	\$ -	\$ 2,018,503	\$ 2,018,503	\$ 1,917,497
Dorchester Total			\$ 3,936,000	\$ -	\$ 2,018,503	\$ 2,018,503	\$ 1,917,497
Frederick	Urbana Elementary-Replacement	-	\$ 19,394,512	\$ 10,102,000	\$ 5,265,877	\$ 15,367,877	\$ 4,026,635
Frederick	Blue Heron (East Frederick County Area) Elementary-New	-	\$ 20,435,000	\$ -	\$ 4,000,000	\$ 4,000,000	\$ 16,435,000
Frederick	Rock Creek School-Replacement	-	\$ 18,891,000	\$ 1,702,976	\$ 5,000,000	\$ 6,702,976	\$ 12,188,024
Frederick	Waverley Elementary-Replacement	-	\$ 26,870,000	\$ -	\$ 4,799,060	\$ 4,799,060	\$ 22,070,940
Frederick	Brunswick Elementary-Replacement	LP	\$ 21,448,000	\$ -	\$ -	\$ -	\$ 21,448,000
Frederick Total			\$ 107,038,512	\$ 11,804,976	\$ 19,064,937	\$ 30,869,913	\$ 76,168,599
Harford	Joppatowne High-Limited Renovation	-	\$ 19,277,000	\$ -	\$ 8,070,000	\$ 8,070,000	\$ 11,207,000
Harford	Bel Air Middle-Roof	-	\$ 4,284,000	\$ -	\$ 2,778,837	\$ 2,778,837	\$ 1,505,163
Harford Total			\$ 23,561,000	\$ -	\$ 10,848,837	\$ 10,848,837	\$ 12,712,163
Howard	New High School #13-New	-	\$ 61,814,384	\$ -	\$ 28,000,000	\$ 28,000,000	\$ 33,814,384
Howard	Talbott Springs Elementary-Replacement	-	\$ 18,813,909	\$ -	\$ 5,698,104	\$ 5,698,104	\$ 13,115,805
Howard Total			\$ 80,628,293	\$ -	\$ 33,698,104	\$ 33,698,104	\$ 46,930,189
Montgomery	Thomas W. Pyle Middle-Addition/Renovation	LP	\$ 5,081,343	\$ -	\$ 4,786,581	\$ 4,786,581	\$ 294,762
Montgomery	Col E. Brooke Lee Middle-Replacement	LP	\$ 13,043,000	\$ -	\$ -	\$ -	\$ 13,043,000
Montgomery Total			\$ 18,124,343	\$ -	\$ 4,786,581	\$ 4,786,581	\$ 13,337,762
Prince George's	William Wirt Middle-Replacement	-	\$ 42,516,000	\$ 19,110,000	\$ 12,029,000	\$ 31,139,000	\$ 11,377,000
Prince George's	New Glenridge Area #2 Middle-New	-	\$ 41,853,000	\$ 17,710,000	\$ 12,059,000	\$ 29,769,000	\$ 12,084,000
Prince George's	William S. Schmidt Environmental Education Center- Renovation/Addition	-	\$ 19,037,129	\$ -	\$ 8,498,000	\$ 8,498,000	\$ 10,539,129
Prince George's	Suitland High-Replacement	LP	\$ 24,600,000	\$ -	\$ -	\$ -	\$ 24,600,000
Prince George's	Charles Herbert Flowers High-HVAC	-	\$ 7,000,000	\$ -	\$ 4,818,563	\$ 4,818,563	\$ 2,181,437
Prince George's Total			\$ 135,006,129	\$ 36,820,000	\$ 37,404,563	\$ 74,224,563	\$ 60,781,566
Queen Anne's	Kent Island High-Roof	-	\$ 2,040,000	\$ -	\$ 552,073	\$ 552,073	\$ 1,487,927
Queen Anne's Total			\$ 2,040,000	\$ -	\$ 552,073	\$ 552,073	\$ 1,487,927
Talbot	Easton Elementary - Dobson Building-Replacement	-	\$ 20,599,736	\$ 17,390,040	\$ 2,972,571	\$ 20,362,611	\$ 237,125
Talbot Total			\$ 20,599,736	\$ 17,390,040	\$ 2,972,571	\$ 20,362,611	\$ 237,125
Washington	Smithsburg High-HVAC	-	\$ 4,203,000	\$ -	\$ 606,368	\$ 606,368	\$ 3,596,632
Washington Total			\$ 4,203,000	\$ -	\$ 606,368	\$ 606,368	\$ 3,596,632

LEA	SCHOOL NAME	Planning Request (1)	(2) Estimated Cost NSF/LP Cost	Prior Year Funding	Current FY 2021 Funding from All Funds	Total Authorization from All Years/Funds	Indicates State Future Obligations for Approved Projects to Date (LP/F)
Wicomico	Beaver Run Elementary-Replacement	-	\$ 27,399,000	\$ 7,360,555	\$ 9,172,886	\$ 16,533,441	\$ 10,865,559
Wicomico	Mardela Middle/High-Renovation/Addition	LP	\$ 36,681,000	\$ -	\$ -	\$ -	\$ 36,681,000
Wicomico Total			\$ 64,080,000	\$ 7,360,555	\$ 9,172,886	\$ 16,533,441	\$ 47,546,559
Worcester	Stephen Decatur Middle-Addition	LP	\$ 3,192,000	\$ -	\$ -	\$ -	\$ 3,192,000
Worcester Total			\$ 3,192,000	\$ -	\$ -	\$ -	\$ 3,192,000
Baltimore City	Armistead Gardens PK-8 #243-Addition/Renovation	-	\$ 19,569,000	\$ -	\$ -	\$ -	\$ 19,569,000
Baltimore City	Maree Garnett Farring PK-8 #203- Addition/Renovation	-	\$ 8,250,000	\$ 1,500,000	\$ -	\$ 1,500,000	\$ 6,750,000
Baltimore City	Furley Elementary #206-Replacement	LP	\$ 21,682,000	\$ -	\$ -	\$ -	\$ 21,682,000
Baltimore City	Northeast Middle #049-Renovation	LP	\$ 17,104,000	\$ -	\$ -	\$ -	\$ 17,104,000
Baltimore City Total			\$ 66,605,000	\$ 1,500,000	\$ -	\$ 1,500,000	\$ 65,105,000
Maryland School for the Blind	Newcomer, Case and Campbell Halls- Renovation/Addition	-	\$ 30,923,414	\$ 22,721,918	\$ 6,578,953	\$ 29,300,871	\$ 1,622,543
Maryland School for the Blind Total			\$ 30,923,414	\$ 22,721,918	\$ 6,578,953	\$ 29,300,871	\$ 1,622,543
Grand Total			\$ 857,794,532	\$ 133,362,430	\$ 189,740,015	\$ 323,102,445	\$ 534,692,087

(1) LP represents projects approved for planning in FY 2021. Projects without LP represents projects that received planning approval in a prior fiscal year

(2) The cost estimates for State funded projects are based on the Net State Funding computation. The estimates for projects without State Funding to Date are based on cost per sf and State Cost Share Percentages at planning approval as shown on the worksheet.

SECTION XIV

SUMMARY FY 2021 PLANNING APPROVALS

<u>Project Name</u>	<u>Project Type</u>	<u>Estimated State Cost</u>
<u>Anne Arundel County</u>		
Arundel Middle	Addition	3,875,000
Quarterfield Elementary	Replacement	12,837,000
Sunset Elementary	K Addition	1,255,000
Van Bokkelen Elementary	K Addition	1,251,000
<u>Baltimore County</u>		
Bedford Elementary	Replacement	18,724,000
Northeast Area @ Ridge Road Elementary	New	19,095,000
<u>Calvert County</u>		
Beach Elementary	Replacement	10,625,000
<u>Carroll County</u>		
Carroll County Career & Technology Center	Renovation/Addition	40,820,000
<u>Cecil County</u>		
North East Middle	Replacement	30,309,000
<u>Frederick County</u>		
Brunswick Elementary	Replacement	21,448,000
<u>Montgomery County</u>		
Ashburton Elementary	Addition/Renovation	73,000
Col E. Brooke Lee Middle	Replacement	13,043,000
Montgomery Knolls Elementary	Addition/Renovation	1,445,000
Pine Crest Elementary	Addition	1,891,000
Takoma Park Middle	Addition/Renovation	4,957,000
Thomas W. Pyle Middle	Addition/Renovation	5,081,343
Walt Whitman High	Addition/Renovation	6,133,000
<u>Prince George's County</u>		
Suitland High	Replacement	24,600,000
<u>Wicomico County</u>		
Mardela Middle/High	Renovation/Addition	36,681,000
<u>Worcester County</u>		
Stephen Decatur Middle	Addition	3,192,000
<u>Baltimore City</u>		
Furley Elementary #206	Replacement	21,682,000
Northeast Middle #049	Renovation	17,104,000
Total number of Planning Approvals: 22		<u>\$296,121,343</u>

Abbreviation:
K - Kindergarten

SECTION XV

SUMMARY FY 2021 CONSTRUCTION APPROVALS

<u>Project Name</u>	<u>Project Type</u>	<u>Allocation</u>
<u>Anne Arundel County</u>		
Arundel Middle	Addition	3,875,000 e
Crofton Area High	New	23,192,079 p2
Edgewater Elementary	Renovation/Addition	3,685,000 b
Richard Henry Lee Elementary	Renovation/Addition	4,190,000 b
Tyler Heights Elementary	Renovation/Addition	1,472,000 b
<u>Baltimore County</u>		
Berkshire Elementary	Replacement	9,290,349 b
Chadwick Elementary	Replacement	16,108,000 e
Colgate Elementary	Replacement	13,520,000 e
Northeast Area @ Ridge Road Elementary	New	1,254,470 p1
<u>Caroline County</u>		
Greensboro Elementary	Replacement	13,512,546 p2
<u>Carroll County</u>		
Carroll County Career & Technology Center	Renovation/Addition	9,000,000 p1
<u>Cecil County</u>		
Chesapeake City Elementary	Replacement	3,283,000 p2
<u>Charles County</u>		
Benjamin Stoddert Middle	Renovation/Addition	8,115,000 p2
Dr. James Craik Elementary	K & PreK Addition/Renovation	131,299 b
Eva Turner Elementary	Renovation/Addition	1,506,663 p2
<u>Frederick County</u>		
Blue Heron (East Frederick County Area) Elementary	New	4,000,000 p1
Butterfly Ridge Elementary	New	974,000 b
Rock Creek School	Replacement	5,000,000 p2
Urbana Elementary	Replacement	5,265,877 p2
Waverley Elementary	Replacement	4,799,060 p1
<u>Harford County</u>		
Joppatowne High	Limited Renovation	8,070,000 p1
<u>Howard County</u>		
New High School #13	New	28,000,000 p1
Talbott Springs Elementary	Replacement	5,698,104 p1
<u>Kent County</u>		
Galena Elementary	Addition/SR	2,916,000 e
<u>Montgomery County</u>		
Ashburton Elementary	Addition/Renovation	73,000 e
Maryvale Elementary/Carl Sandburg School	Replacement	12,436,000 e
Montgomery Knolls Elementary	Addition/Renovation	1,445,000 e
Pine Crest Elementary	Addition	1,891,000 e

Abbreviation:
K - Kindergarten

Funding Code:
b Balance of multi-year funds
p Partial funds
e Entire funding for project

SECTION XV

SUMMARY FY 2021 CONSTRUCTION RECOMMENDATIONS - cont'd

<u>Project Name</u>	<u>Project Type</u>	<u>Allocation</u>
<u>Montgomery County cont'd</u>		
S. Christa McAuliffe Elementary	Renovation	1,541,000 e
Takoma Park Middle	Addition/Renovation	4,957,000 e
Thomas W. Pyle Middle	Addition/Renovation	4,786,581 p1
Tilden Middle/Rock Terrace School	Replacement	14,714,780 b
Walt Whitman High	Addition/Renovation	6,133,000 e
<u>Prince George's County</u>		
Cherokee Lane Elementary	Replacement	8,957,000 b
New Glenridge Area #2 Middle	New	12,059,000 p2
William S. Schmidt Environmental Education Center	Renovation/Addition	8,498,000 p1
William Wirt Middle	Replacement	12,029,000 p2
<u>Talbot County</u>		
Easton Elementary - Dobson Building	Replacement	2,972,571 p3
<u>Washington County</u>		
Sharpsburg Elementary	Replacement	3,104,978 b
<u>Wicomico County</u>		
Beaver Run Elementary	Replacement	9,172,886 p2
<u>Maryland School for the Blind</u>		
Newcomer, Case and Campbell Halls	Renovation/Addition	6,578,953 p4
<u>Baltimore City</u>		
Fallstaff PK-8 #241	Renovation - Media Center	672,000 e
	Total	<u>\$288,880,196</u>

Abbreviation:
K - Kindergarten

Funding Code:
b Balance of multi-year funds
p Partial funds
e Entire funding for project

SECTION XVI

SUMMARY FY 2021 SYSTEMIC RENOVATION FUNDING

<u>Project Name</u>	<u>Project Type</u>	<u>Allocation</u>	
<u>Allegany County</u>			
Center for Career & Technical Education	SR:Roof - Phase I	100,567	b
Washington Middle	SR:Boilers	93,000	b
Braddock Middle	SR:Boilers	986,000	e
<u>Anne Arundel County</u>			
Maryland City Elementary	SR:Roof	857,000	e
<u>Calvert County</u>			
Patuxent High	SR:HVAC	516,000	b
Northern High	SR:Sewage Plant	848,000	e
Mt. Harmony Elementary	SR:HVAC	821,500	e
Southern Middle	SR:HVAC - Phase I	1,666,000	p1
<u>Carroll County</u>			
Winfield Elementary	SR:Roof	482,894	p1
<u>Cecil County</u>			
Cecil Manor Elementary	SR:HVAC	22,987	p1
Leeds Elementary	SR:Boiler	350,000	e
<u>Dorchester County</u>			
Vienna Elementary	SR:Roof	335,387	b
Sandy Hill Elementary	SR:Roof	1,558,000	e
Cambridge/South Dorchester High	SR:Roof	2,018,503	p1
<u>Frederick County</u>			
Governor Thomas Johnson High	SR:Roof	448,000	e
Middletown High	SR:Roof	168,320	e
Heather Ridge School	SR:Roof	579,200	e
Ballenger Creek Middle	SR:Roof	361,600	e
Lincoln Elementary "A"	SR:Roof	551,040	e
<u>Garrett County</u>			
Southern High	SR:Building Envelope	1,335,000	e
<u>Harford County</u>			
Hickory Elementary	SR:Roof	1,587,941	b
Bel Air Middle	SR:Roof	2,778,837	p1
<u>Kent County</u>			
Rock Hall Elementary	SR:HVAC/Fire Safety	76,760	b

Abbreviation:
SR - Systemic Renovation

Funding Code:
b Balance of multi-year funds
p Partial funds
e Entire funding for project

SECTION XVI

SUMMARY FY 2021 SYSTEMIC RENOVATION FUNDING - cont'd

<u>Project Name</u>	<u>Project Type</u>	<u>Allocation</u>
<u>Montgomery County</u>		
Kingsview Middle	SR:Roof	867,000 e
Quince Orchard High	SR:HVAC	624,000 e
Clarksburg Elementary	SR:HVAC	562,000 e
Westland Middle	SR:Roof	558,000 e
Bethesda Elementary	SR:Roof	518,000 e
Meadow Hall Elementary	SR:HVAC	499,000 e
Ronald McNair Elementary	SR:HVAC	487,000 e
John Poole Middle	SR:Roof	479,000 e
Brookhaven Elementary	SR:HVAC	474,000 e
Argyle Middle	SR:Roof	428,000 e
Damascus Elementary	SR:Roof	353,000 e
Lucy V. Barnsley Elementary	SR:Roof	307,000 e
<u>Prince George's County</u>		
Charles Herbert Flowers High	SR:HVAC	4,818,563 p1
<u>Queen Anne's County</u>		
Bayside Elementary	SR:Windows/Doors	147,900 e
Sudlersville Elementary	SR:Chiller	153,000 e
Sudlersville Elementary	SR:Fire Safety	150,000 e
Kent Island High	SR:Roof	552,073 p1
<u>St. Mary's County</u>		
Green Holly Elementary	SR:HVAC	934,981 b
Dynard Elementary	SR:Roof/HVAC	4,395,000 e
<u>Somerset County</u>		
Crisfield Academy & High	SR:Roof	2,900,000 e
<u>Washington County</u>		
South Hagerstown High	SR:Roof	1,214,543 b
Smithsburg High	SR:HVAC	606,368 p1
Western Heights Middle	SR:Roof	1,873,000 e
North Hagerstown High	SR:Chiller	711,000 e
<u>Worcester County</u>		
Pocomoke Middle	SR:Roof	1,275,000 e

Abbreviation:
SR - Systemic Renovation

Funding Code:
b Balance of multi-year funds
p Partial funds
e Entire funding for project

SECTION XVI

SUMMARY FY 2021 SYSTEMIC RENOVATION FUNDING - cont'd

<u>Project Name</u>	<u>Project Type</u>	<u>Allocation</u>
<u>Baltimore City</u>		
Diggs-Johnson Building #162	SR:Vertical Packaged Classroom Air Conditioning Units	1,632,000 e
Harlem Park PK-8 #035	SR:HVAC	5,952,000 e
Franklin Square PK-8 #095	SR:HVAC/Windows/Doors	6,720,000 e
Harlem Park Building #078	SR:Elevator	446,000 e
Northern Building #402	SR:Elevator	446,000 e
Woodhome PK-8 #205	SR:Roof	2,995,000 e
Collington Square PK-8 #097	SR:Fire Safety	288,000 e
Curtis Bay PK-8 #207	SR:Roof/HVAC	6,720,000 e
Hazelwood K-8 #210	SR:Roof	1,897,000 e
Furman L. Templeton Elementary #125	SR:Roof	1,958,000 e
Federal Hill Prep PK-5 #045	SR:Roof/Structural	2,296,000 e
George Washington Elementary #022	SR:Roof/Windows/Doors/HVAC/Fire Safety	3,994,000 e
Barclay PK-8 #054	SR:Roof	1,267,000 e
Dickey Hill PK-8 #201	SR:Roof	1,555,000 e
Thomas Jefferson PK-8 #232	SR:Roof	1,901,000 e
Northern Building #402	SR:Roof	4,992,000 e
Baltimore Polytechnic Institute High #403	SR:Elevator	446,000 e
Curtis Bay PK-7 #207	SR:Windows/Doors	1,298,000 e
Thomas Jefferson PK-8 #232	SR:Elevator	446,000 e
Federal Hill Prep PK-5 #045	SR:Elevator	446,000 e
Walbrook Building #411	SR:Roof	5,280,000 e
	Total	<u>\$97,404,964</u>

Abbreviation:
SR - Systemic Renovation

Funding Code:
b Balance of multi-year funds
p Partial funds
e Entire funding for project